

- Connect an RS485 Network to a USB Port
- 1500 Volt Isolation between RS485, and USB
- Ultra Thin - < 1/4"
- Powered from USB Port
- Windows driver installs easily
- USB Cable Included
- Speed selectable from 1200 bps to 115,200 bp



The UniPak™HD Model UP307USB is a DIN rail mount USB to Asynchronous RS485 converter with 1500 volt isolation between the ports. The USB to RS485 converter allows today's newer PCs, many without DB9 serial ports, to interface to serial networks for configuration, maintenance or permanent installation with no external power supply requirement. The module's ultra thin package (less than 1/4" thick) makes it ideal where panel space is a premium. Other features include quick connection spring clamp terminals, and front panel diagnostic LEDs. There are red LEDs to indicate transmit and receive and a yellow LED to indicate the presence of power. The receive LED also indicates that wires may not be correctly installed. If it is steady on, please check the wiring.

The UP307USB comes supplied with a USB to mini-USB cable. The drivers for Windows 98, 2000 and XP may be downloaded from our website: (<http://www.ioselect.com/ioSelect/Downloads.htm>). The driver installs easily using the Windows New Hardware Wizard. The driver installs twice. Once for the serial converter and once as a virtual device for control of the USB as a COM port. Once installed the port can be adjusted from the Device Manager in Windows or from the application communicating via the RS485. The UP307USB is also compatible with Linux. The 1500 Vac isolation provides protection to the PC from transients that may be common in an industrial environment.

Signal Conversion made easy from ioSelect.

Communication Specifications

Speed	1200 to 115,200 bps	
LED Status	Power	Green
	Transmit	Red
	Receive	Red
Standard	USB 1.1 and 2.0	
Speed	1200 to 115,200 bps	
Software	Windows 98, 2000, XP	
Cable	USB A to mini USB B	
Capacity	32 Standard nodes	
	External termination resistor (Terminals T1 and T2)	

Performance Specifications

Isolation	1500 Vac between USB to RS485
Humidity	30-90% @ 40 °C
Current	60 mA maximum
Operating	
Temperature	-20 to 65 °C (-4 to 149 °F)
Storage	
Temperature	-40 to 85 °C (-40 to 185 °F)
Dimensions:	6.2 x 93.1 x 102.5 mm (0.244 x 3.67 x 4.035 in)
Weight:	43 g (1.5 oz)

Ordering Information: IOS-UP-307USB

USB to RS485 Isolated Serial Converter

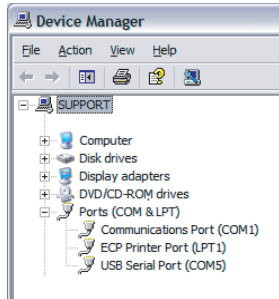
Fax: (800)303-5381

Ph: (877) 3GET IOS (343-8467)

www.ioselect.com
rev: 1/08

Computer Installation

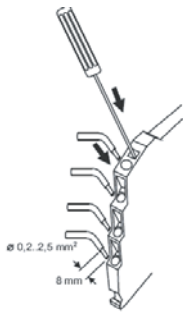
Plug the USB cable into your computer and wait for the New Hardware Wizard to begin. Load the driver CD and select that location or allow Windows to find it with its automatic search. Once the driver is loaded a virtual COM port will appear in Windows Device Manager. The COM port number will be needed to establish serial communications for most interfacing software. To find the COM port number:
Go to System Properties. Select the Hardware tab and click on the Device Manager button. The new COM port will be listed as USB Serial Port. The COM port number is assigned by Windows.



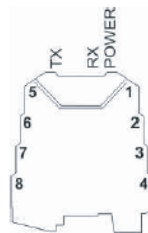
The UP307USB is located on COM5 in this example. This example is not a true representation of the Device Manager window but will be similar to what is seen on your computer.

Wiring and Installation Diagrams

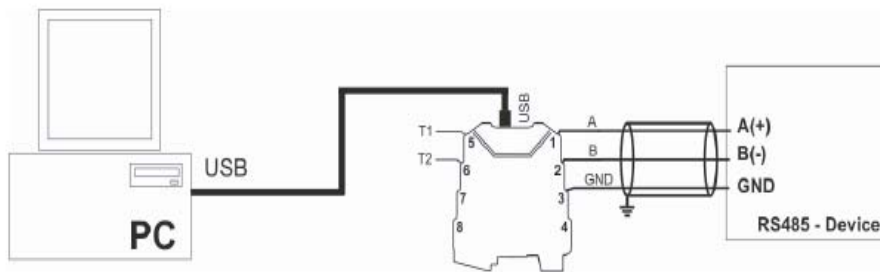
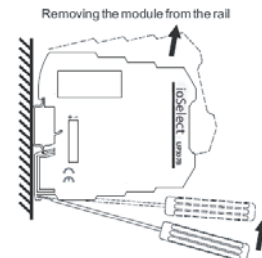
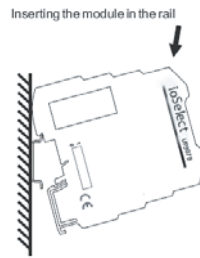
Cage Clamp Connection



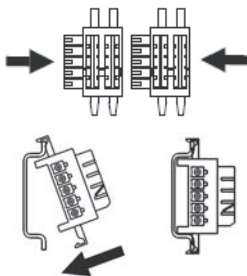
LED Location



Installation



HDBUS Connector



Dimensions (mm)

