



# TBox Dial It! 1.0.6

Manual

---

## Table of Contents

---

<b>1. PRESENTATION .....</b>	<b>2</b>
<b>2. INSTALLATION .....</b>	<b>3</b>
<b>3. STARTING TBOX DIAL IT ! .....</b>	<b>3</b>
<b>4. CONFIGURATION.....</b>	<b>4</b>
4.1. 'DIAL' PAGE.....	4
4.2. 'ADDRESS BOOK' PAGE .....	5
4.3. THE FILE PHONEBOOK.DAT .....	5
<b>5. DIALING TBOX.....</b>	<b>6</b>
<b>6. ADVANCED USE OF TBOX DIAL IT! .....</b>	<b>8</b>
<b>7. USING TBOX DIAL IT! UNDER WINDOWS XP .....</b>	<b>9</b>
7.1. SETTINGS OF DIAL UP ENTRY OF TBOX DIAL IT !! .....	9
7.2. FIREWALL .....	12
7.3. ACTIVE X.....	12
<b>8. COMMUNICATION PROBLEMS.....</b>	<b>13</b>
8.1. COMMUNICATION PORT OF THE MODEM .....	13
8.2. APPLICATIONS RUNNING ON THE PC .....	15
<b>9. IE EXPLORER OPTIONS.....</b>	<b>15</b>

## 1. Presentation

TBox Dial It! is a utility dedicated to dialing RTU as 'Web Server' (**TBOX**, **TBox-MS**, **TBox-LITE** and **TBox Low Power**). It works directly from Internet Explorer and makes dial-up the RTU very easy and friendly !

TBox Dial It! has the following features:

- **Automatic creation** of 'dial-up entry'. It is not needed to create the dial-up entry, or .INS file from TWinSoft for each RTU; **TBox Dial It!** creates it and adapt it when dialing the RTU.
- **Creation of an address book** with all RTU to call.
- **Dial of the RTU.**
- When connected, **automatic identification** of the IP address of the RTU and **loading of index HTML page (standard)** or a specific URL.
- Within a standard HTML page, possibility to create hyperlink to call RTU.
- As of version 1.0c, it supports English, French, German and Greek languages.



1. Internet Explorer 5.00 minimum needed.
2. To be installed properly, **TBox Dial It!** needs the **Windows RAS service to be installed** on your PC. According to the Platform you are working with, the RAS service needs to be installed manually. This is the case for instance with Windows NT.
3. Check that TCP/IP protocol is installed on the 'Dial-up adapter' (for example under Windows '98 in *Network Neighborhood* properties)



Read **chapter 7.** about dialing RTU using Internet Explorer under **Windows XP.**

## 2. Installation

As of TWinSoft 8.00, **TBox Dial It !** is automatically installed together with the WebFormViewer (ActiveX) and also installed together with TWinSoft.

In case you are an operator that only needs to dial RTU, to display HTML pages, you install the **WebFormViewer** only. It contains the ActiveX dedicated to the RTU and the utility **TBox Dial It !**

The installation can be carried out from the CD-ROM of TWinSoft or from our Web Site [www.tbox.biz](http://www.tbox.biz) page 'Download zone' → 'Software'.

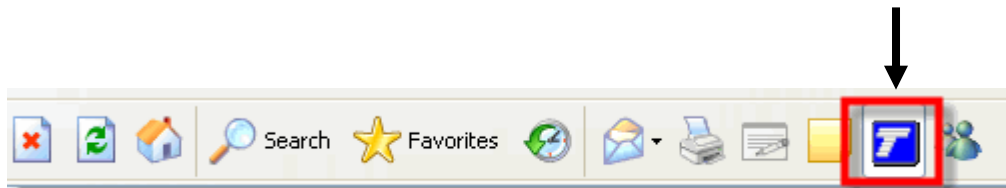


One must be logged as **Administrator** to install TWinSoft or WebFormViewer.

## 3. Starting TBox Dial It !

**TBox Dial It !** is accessible directly from Internet Explorer.

A **TBox Dial It !** toolbar button is available. It is automatically inserted in the 'Standard button' toolbar.



Clicking the button, opens the Explorer Bar window (at the left side of Internet Explorer window) with **TBox Dial It !** main menu.

Depending on the version of Windows and Internet Explorer, the button might not be installed automatically. In such case, you can do it manually from the menu 'View' → 'Toolbars' → 'Customize'. Then you select the button 'TBox Dial It!'

Another way to start **TBox Dial It !** is by typing in the address bar the URL:

```
tbox:list
```

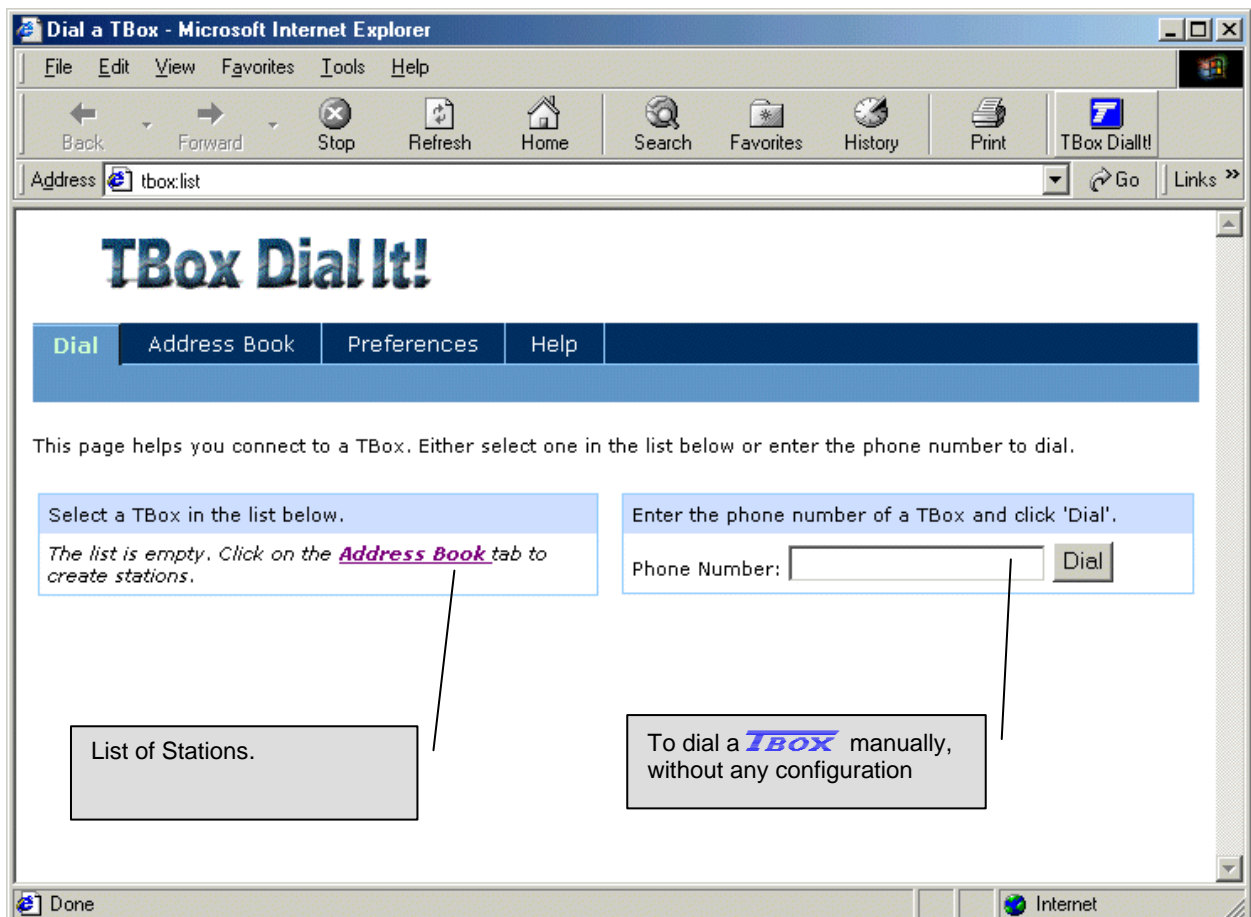
## 4. Configuration

TBox Dial It! is composed of various HTML pages:

'Dial' page	Where the list of RTU appears. It can also be used to dial a RTU manually, without any configuration.
'Address Book' page	Where you create the RTU station with their tel. number, ...
'Preference' page	Where you select a language (Français, English, Greek, ...). You can also change the modem selection.
'Help' page	Where the use of TBox Dial It! is explained.

### 4.1. 'Dial' page

When TBox Dial It! has been started from the 'Start' button of Windows, under the 'Programs' folder, the following HTML page is opened.



Clicking 'Address Book' allows you to create the RTU stations.

## 4.2. 'Address Book' page

From the Address Book, you create the station (RTU you wish to dial).

Click '[Click here to create a new station](#)' or '[New Station](#)' from the list to open the following page:

**TBox Dial It!**

Dial Address Book Preferences Help

Station Name:  Name which appears in the List. It cannot start with a number.

Description:

Phone Number: Area Code:  Phone Number:

Country:

Connect to an internal line (Do not use area code and dialing properties)

URL (Optional):

Add Station to Favorites

OK Cancel Dial Help

HTML page opened when connected. When left empty the 'index.htm' is opened

## 4.3. The file PhoneBook.dat

Each station configuration is saved in the text file **PhoneBook.dat**.

The file is saved in the directory:

..\Document and Settings\\Application data\TBoxDialIt



If a previous version of TBox Dial It! is present during installation, the existing PhoneBook.dat will be copied (from ..Program Files\Common Files\Techno Trade) to:

..\Document and Settings\All User\Application data\TBoxDialIt

All new entries will be created in the personal user's Phonebook.dat (see above)

The advantage of having this configuration in a separate file allows you creating the address book on one PC and to transfer it to another PC.

If you are integrator, and you install regularly new stations, each time you install a new RTU with 'Web Server' feature, you add it to the file 'PhoneBook.dat' and send it to your customer, to keep him updated. He will have to copy it into his personal "Application data" directory.

To **sort the stations** as you like, for instance by alphabetic order, open the file with 'Notepad' and re-arrange the order of the stations.

## 5. Dialing TBox

After creation of the stations, they are available in a list from the 'Dial' page.

Example with opening of the 'Dial' page from the 'TBox Dial It!' tool button.

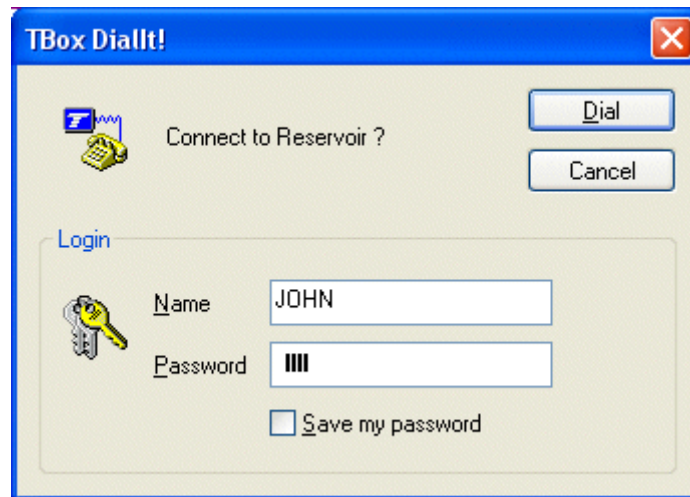
The screenshot shows a Microsoft Internet Explorer browser window. The address bar contains the URL `http://192.168.2.2/`. The browser's menu bar includes File, Edit, View, Favorites, Tools, and Help. The toolbar contains Back, Forward, Stop, Refresh, Home, Search, Favorites, History, Print, and a 'TBox DialIt!' button. The main content area displays the 'TBox Dial It!' application. On the left, there is a sidebar with links for [Address Book], [Preferences], and [Help]. Below these links, a message states: 'This page helps you connect to a TBox. Either select one in the list below or enter the phone number to dial.' There are two input options: a text box for 'Phone Number:' with a 'Dial' button, and a list of stations: Oostend, Westend, and Antwerpen. A 'Next Page' link is visible at the bottom right. Three callout boxes provide instructions: Callout 1 points to the 'Oostend' link in the list, stating '1. Selection of the station. Dial of the station.' Callout 2 points to the address bar, stating '2. When connected, automatic identification of the IP address.' Callout 3 points to the status bar area, stating '3. Loading of 'index.htm' or of the page declared as URL (optional).'

The procedure is the following:

1. Selection of the station in the list window.  
Opening of the 'connection' dialog box where you can enter your name and password (in case the RTU is protected).



**Important** : Depending on the version of Windows and/or Internet Explorer, you have to type a name and password, **even if the RTU is not protected**. In some case Windows requires a name and password to continue the connection procedure.



2. When the PC is connected to the RTU, Internet Explorer automatically identifies its IP address and copies it as URL in the Address bar.
3. Loading of the HTML page declared as URL (optional).  
In case there is no URL declared, the default 'index.htm' is loaded.

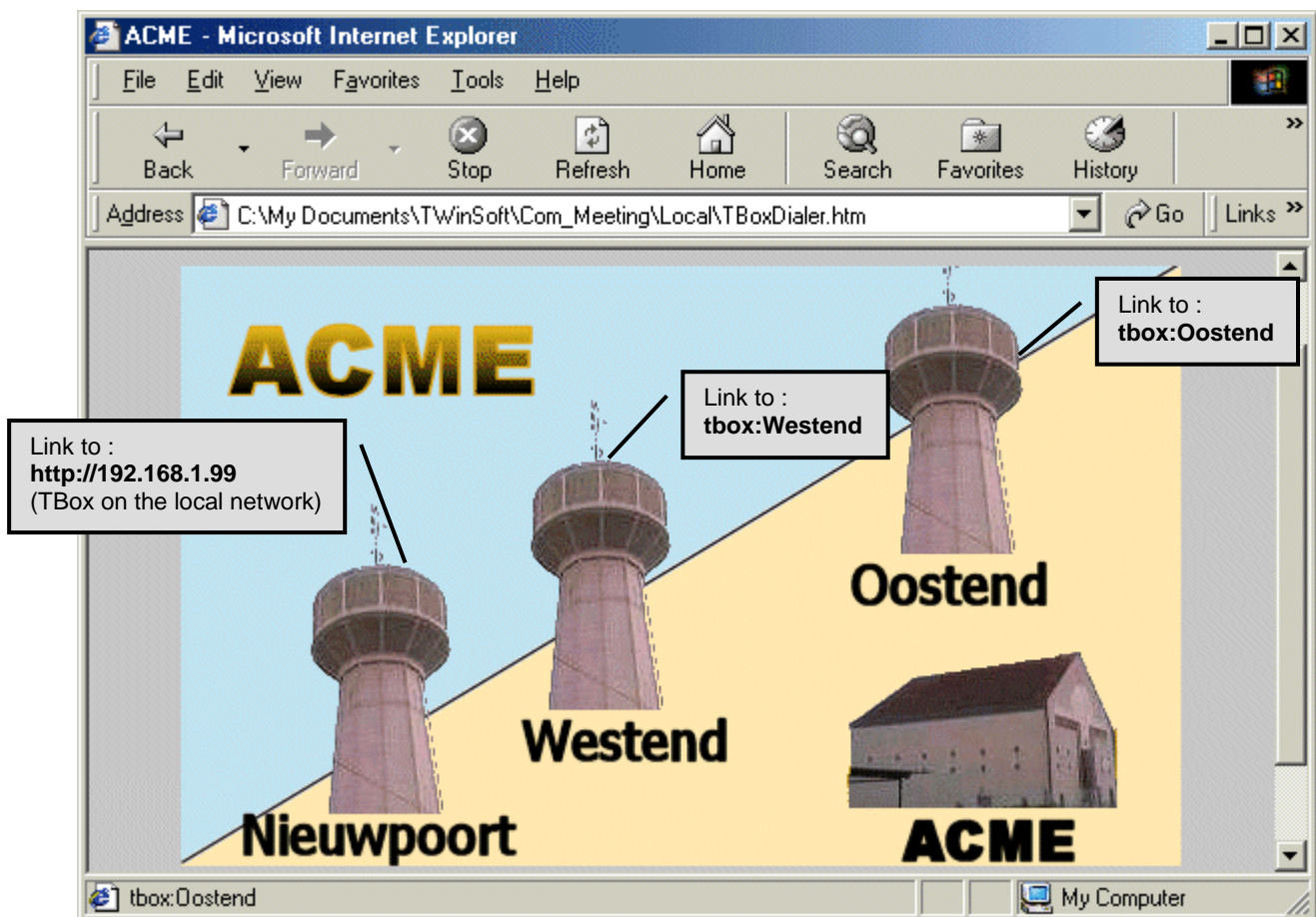
## 6. Advanced use of TBox Dial It!

TBox Dial It! introduces its own syntax in URL's. It can be used from any standard HTML page or directly from the Address bar to access a page.

<b>Syntax:</b>	tbox:<parameter>
tbox:dial	Opens the 'Dial' page.
tbox:config	Opens the 'Address Book' page.
tbox:preferences	Opens the 'Preferences' page.
tbox:help	Opens the 'Help' page.
tbox:Oostend	Dial the TBox Station 'Oostend' (from the address book).
tbox:0451234567	Manual Dial to the RTU with tel. number 0451234567.
tbox:=AB3030	Manual Dial to the RTU with tel. number 3030. The sign '=' allows to insert letters in telephone number. The URL is then not considered as a Station name but as a telephone number.

### *Example:*

In a HTML page, the URL referring to Station name, or telephone number can be used as hyperlink, to access the stations by simply clicking objects in an image, or on an area on a map for instance.





## 7. Using TBox Dial It! under Windows XP

### 7.1. Settings of Dial up entry of TBox Dial It !!

To access the RTU as a WebServer, Internet Explorer needs a 'Dial-up entry'. The dial-up entry is the link to the ISP; before accessing a Website, one needs first to connect to an ISP.

The RTU is then also considered as an ISP.

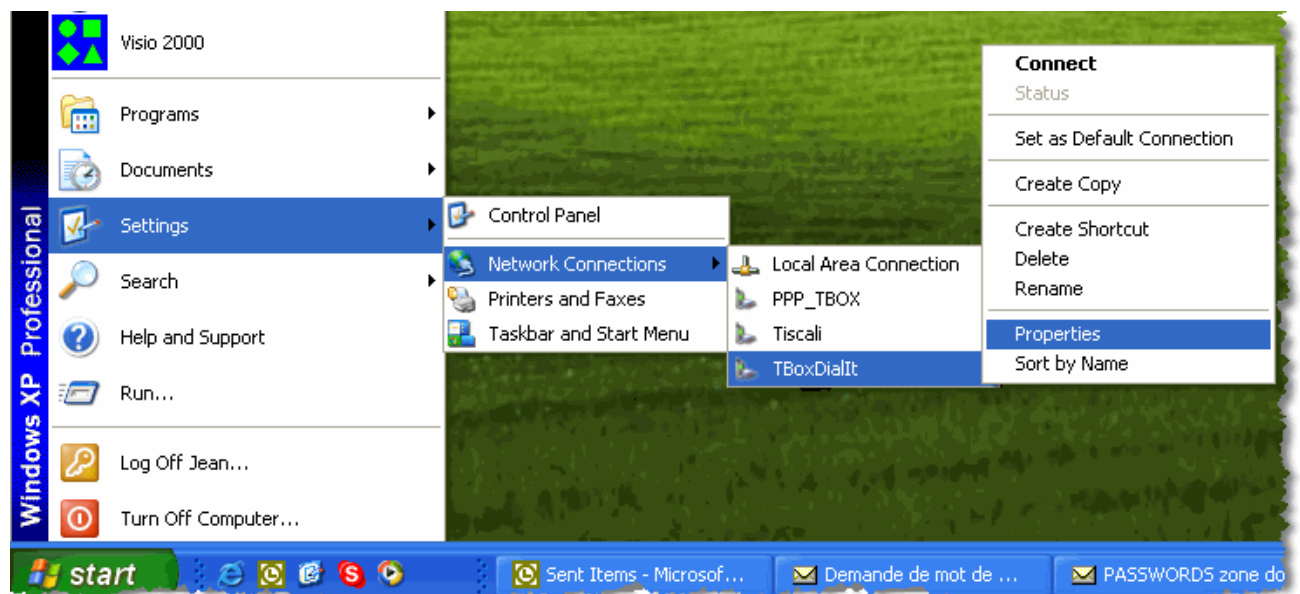
To make things easy, the dial-up entry is created automatically at the first connection using **TBox Dial It !**

But working under Windows XP it needs to be modified to work properly.



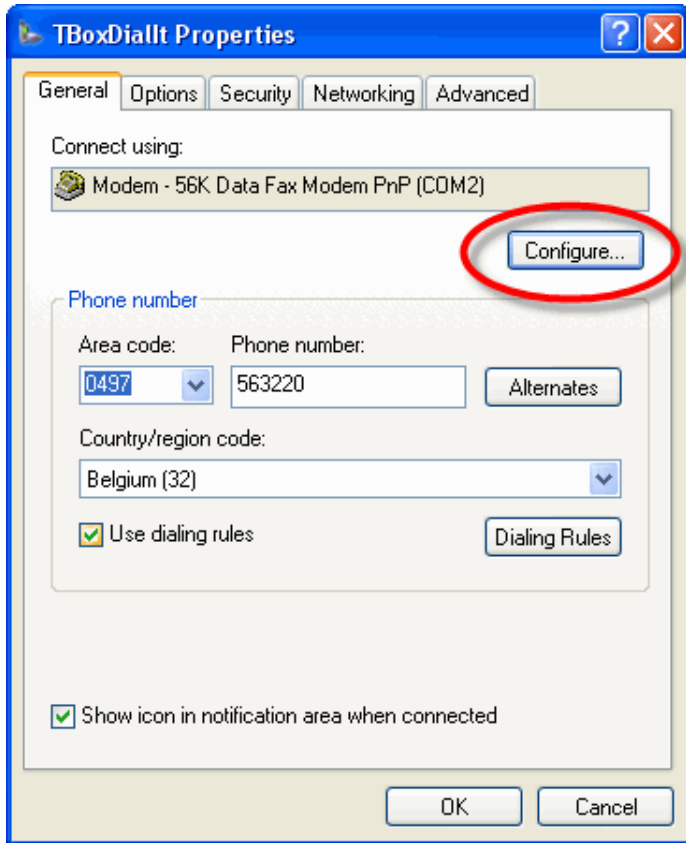
As it is created at the first connection, **you need first to dial a RTU.**

You can then access it from the 'Start' menu:



Right-click the entry **TBox DialIt!** and select 'Properties'.

Check the following menus:



In the tab 'General', select the **modem configuration**.



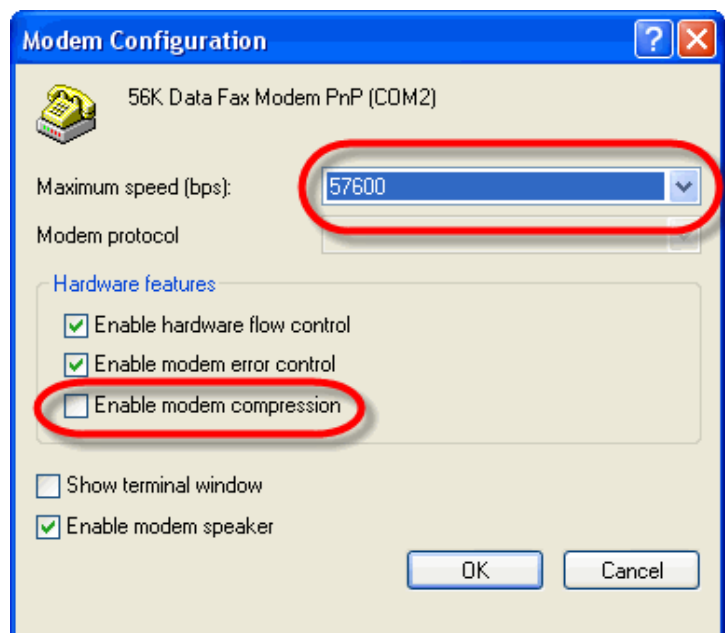
The modem selected corresponds to the one you have chosen in the 'Preferences' of TBox Dial It !

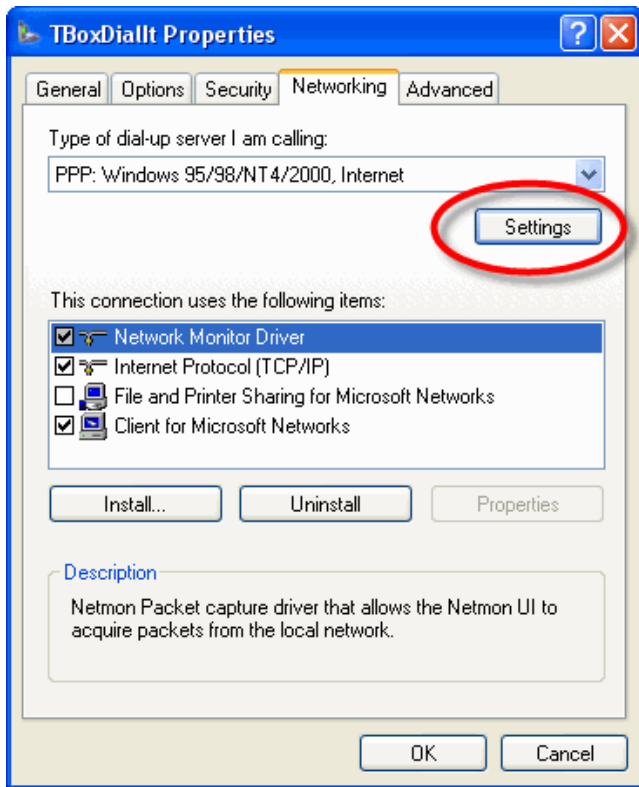
The maximum Baudrate is not so important.



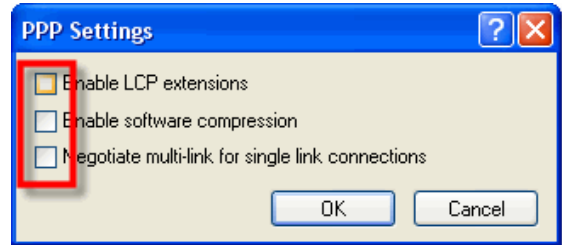
When dialing a **TBox LP300**, the maximum Baudrate **must be reduced to 9600 Bps**

Remove **modem compression**

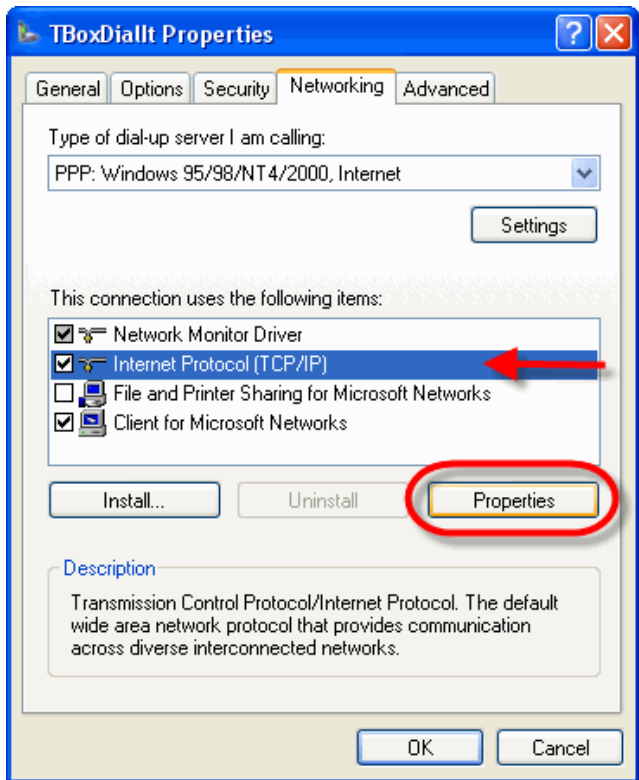




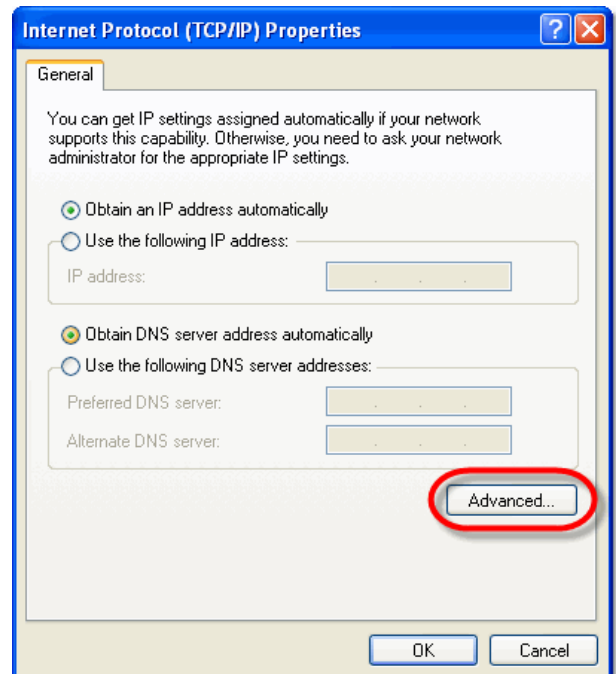
In the tab 'Networking', select the **PPP Settings**.



Check out all options

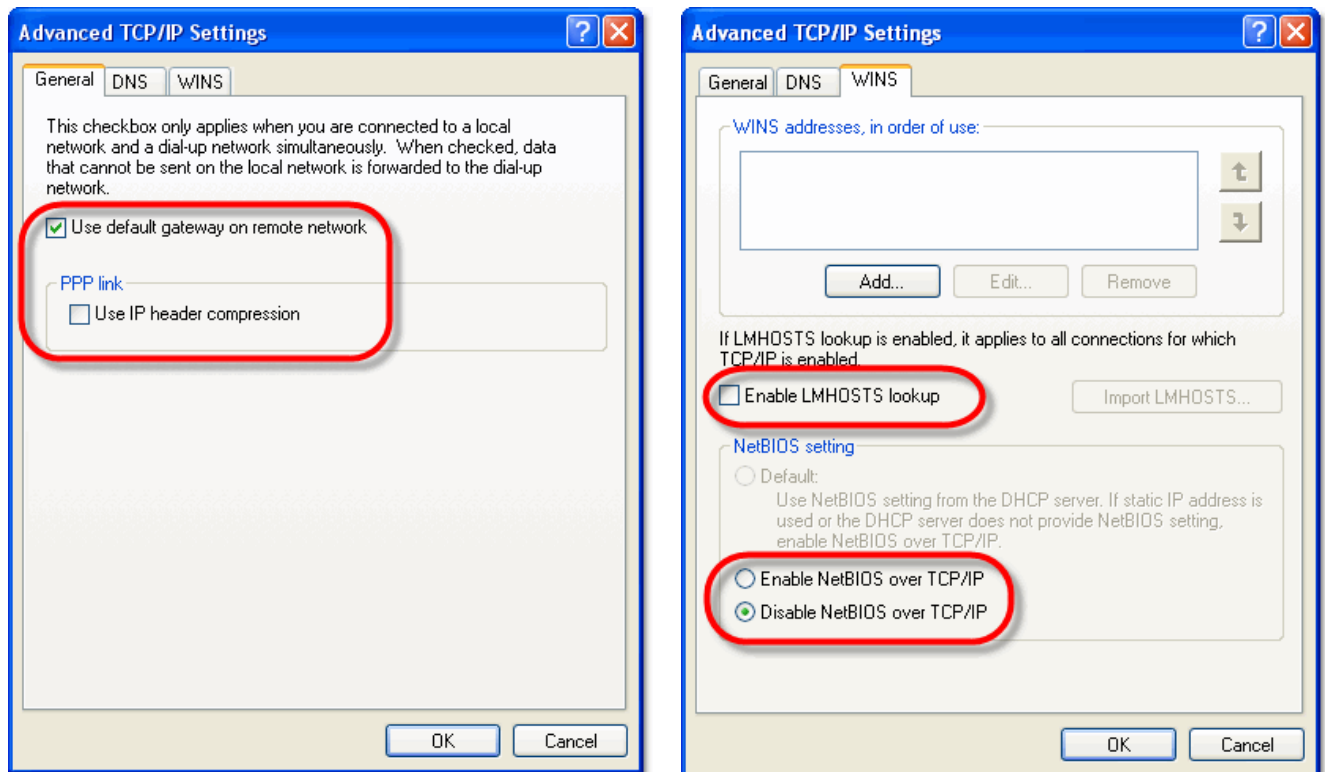


With *Internet Protocol* connection selected, click 'Properties'...



... then 'Advanced...'

... and configure TCP/IP settings like following:



The option "Use default gateway on remote network" must be active to access remote device connected to TBox, using IP Forwarding (**TBox-MS** and **TBox-LITE**)

## 7.2. Firewall

There is **no limitation** because of the Firewall.

You can leave the Firewall active on TBox Dial It ! dial-up entry.

## 7.3. Active X

There is **no problem** due to a highest level of protection against ActiveX.

The ActiveX are installed manually, during TWinSoft or WebForm Viewer installation (see chapter 1)

There is no download of ActiveX during communication with TBox and therefore no danger.

## 8. Communication problems

### 8.1. Communication port of the modem

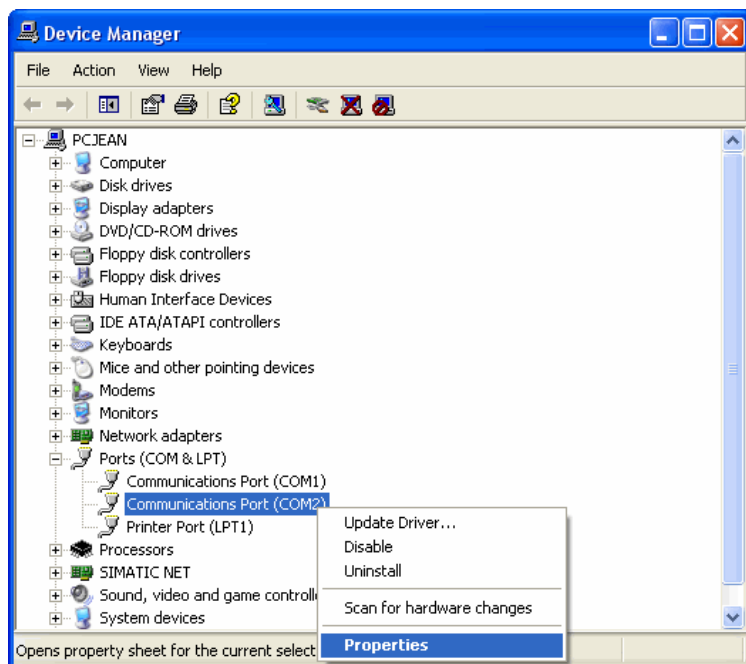
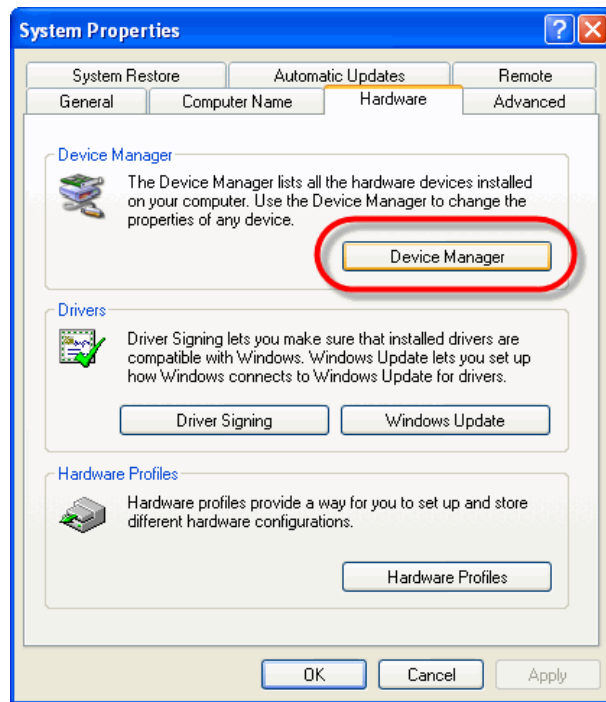
Depending on the combination:

**Hardware of Serial Port - Mother board – version of Windows**

you might have communication problem because of the buffer settings of the serial port.

*Example with Windows XP:* From the control panel, select the 'System' menu:

From the System properties, open the tab 'Hardware' and open the 'Device Manager'.

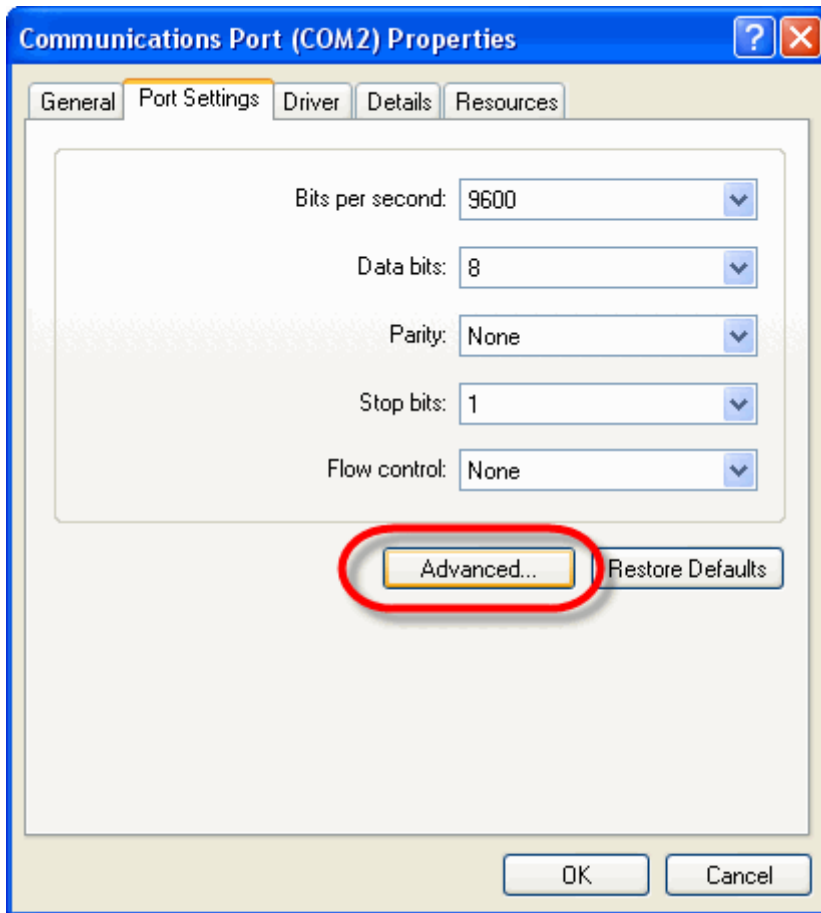


Right-click the port used by the modem and select 'Properties' :

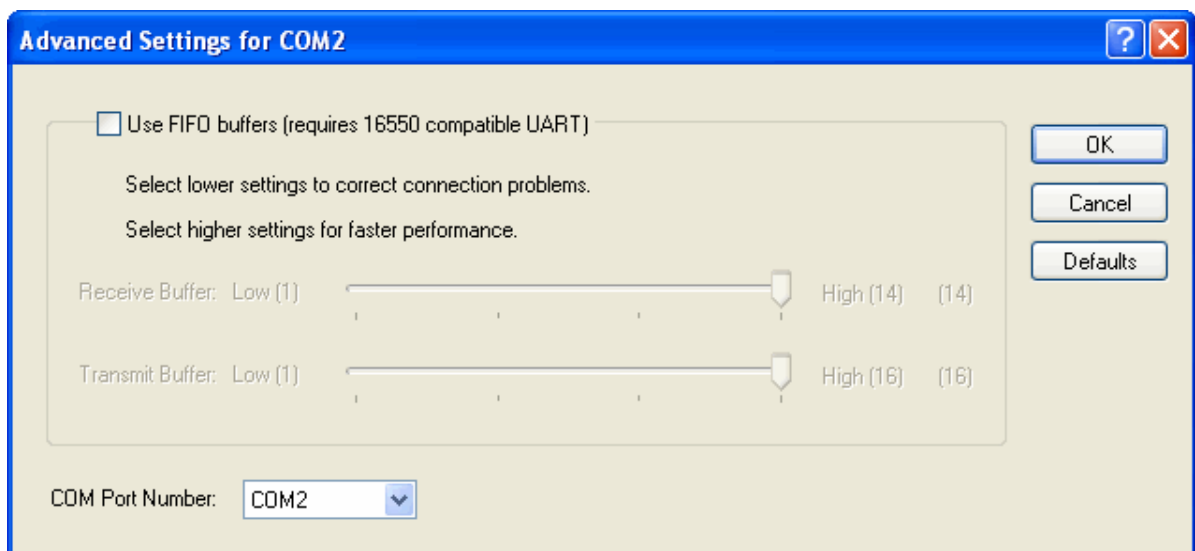


If you don't know which port is used, you can find it from the menu **Phone and Modem options** from the Control panel.

Once in the properties, from the tab 'Port Settings', open the 'Advanced...' parameters:



By default the communication port use FIFO buffers.



In some cases you might have better result by de-activating the buffers.  
**There is no rule !** It depends on PC !

## 8.2. Applications running on the PC

Communication problems may be caused by applications using TCP/IP communication, like *Skype, MSN Messenger, Yahoo messenger,...*

Try as much as possible **to stop all those applications** when running **TBox Dial It !**

The risk is that when **TBox Dial It !** is connected to the TBox, those applications seeing a TCP/IP connection tries to communicate which may interfere on downloading of HTML pages.

## 9. IE Explorer options

Some general rules about IE options (from main menu → 'Tools')

Tab Connection: select 'Do never dial a connection'. **TBox Dial It !** will generate the modem connection using its 'Dial-up entry'.

Tab General: If you have done a lot of connections with many different settings, it is preferable to clean up the history.

Select 'Delete Files' → Offline content

Select 'Clear History'