

January 6, 2009

<u>TWinSoft build number:</u>	1238
<u>TBox MS32 OS version:</u>	1.14.161
<u>TBox MS16 / LITE OS version:</u>	3.24.682
<u>TBox WM:</u>	3.24.682
<u>TBox-CPU3 OS version:</u>	5450 – 5536
<u>TBox LP100, LP200 OS version:</u>	2.00.230
<u>TBox LP 300 OS version:</u>	2.00.242 & 3.24.682
<u>Flocom OS version:</u>	2.00.241 & 3.24.682

Table of contents

UPLOAD OS.....	3
UPLOADED OS / KERNEL WITH -MS32.....	3
UPLOADED OS / LOADER WITH -MS16, -LT.....	3
UPLOADED OS WITH -TBOX CPU3.....	3
KNOWN ISSUES.....	4
1. SAVE/RESTORE INTERNAL REGISTERS.....	5
2. NEW SECURITY FEATURES.....	6
2.1. HTTP PROTECTION.....	6
2.2. HTTPS.....	10
2.3. IEEE 802-1X.....	10
3. ABOUT SMS.....	10
3.1. SENDING OF DATALOGGING THROUGH SMS.....	10
3.2. SMS MANAGEMENT IN PDU FORMAT.....	11
3.3. SMS IN UCS-2 FORMAT.....	11
4. SMTP – “SMTP LOGIN”.....	12
5. FTP – ACTIVE MODE.....	12
6. PROTOCOL “PRINTER” ON RS485.....	13
7. LOCALIZATION.....	13
8. ASSISTANCE TO “RTU UPLOAD FAILED”.....	14
9. NEW RUNTIME PARAMETER “ALARM TRIES”.....	15
10. BETTER INDICATION OF SERIAL DEFAULT BAUDRATE.....	15
11. RTU CONVERSIONS.....	16
11.1. CPU-3 TO -MS16.....	16
11.2. -LT TO -LT.....	16
12. I/O SIMULATION STATUS.....	16
13. WEBFORM – NEW VB SCRIPT PARAMETER.....	17
14. NEW MS CARD – MS-MESH.....	17
15. NEW LOW POWER RTUs.....	18
16. NEW SMS SERVICES.....	18

FIXES & ENHANCEMENT IN TWInSOFT RELEASE 10.06.1238.....19
FIXES & ENHANCEMENT IN TWInSOFT RELEASE 10.06.1237 (RC2).....20
FIXES & ENHANCEMENT IN TWInSOFT RELEASE 10.06.1236 (RC1).....21

Upload OS

Some new features and corrections apply to TWinSoft only or to OS only. Some concern both TWinSoft and OS.

In order to take benefit of all those features, you need to **upload the new OS in your RTU**. From the main menu of TWinSoft: 'Communication' → 'Upload' → 'Operating system', select the higher version.

We advise to upload the OS locally and with an empty program.

Upload OS / Kernel with -MS32

TBox MS32 Operating System runs on LINUX, several libraries and drivers.

New Operating System may also require uploading of LINUX component(s). Version of the different modules is checked automatically when uploading the OS.

As of TWinSoft 10.02 and OS 1.06.xxx,

TBox MS32 supports direct uploading of LINUX module(s) from TWinSoft, including handling of versions.

In order to get to OS 1.06.xxx or higher, you need **first to upload the intermediate OS 1.05.55**

During upload from 1.05 to 1.06 or higher, **current Tag values will be lost** (due to the new organization of Tags to support TEXT Tags)

If generating Pack&Go file, **the same sequence needs to be achieved**.

When OS 1.06 or higher has been uploaded, it is not possible to download to a lower version.



Upload to OS 1.06.xx and higher is **only possible as of OS 1.04.xx** and CPU shipped **as of February 2008**.
With lower version of OS, the CPU must be sent back to your distributor

As of TWinSoft 10.04 and OS 1.09.xxx

LINUX Kernel is automatically uploaded if needed. **We do not advise you upload LINUX kernel through modem, GSM or GPRS connections.**

Upload OS / Loader with -MS16, -LT

With **TBox MS16** and **TBox LITE**, a **new Loader** might also be available. When uploading OS, if TWinSoft detects the loader in the RTU is older, it will prompt you to upload the new version of loader: **say YES !**

Upload OS with -TBox CPU3

NOTE: with **TBOX** CPU-3, **OS 5499** should only be used to upgrade from **54xx** to **55xx** with CPU shipped as of **August 2005**.

Known Issues

1. **TMA files support maximum 247 Sampling Tables**

Above this quantity, the tables will not be included into the TMA file.

No problem to retrieve more than 247 tables with TView using "Download Scheduling".

2. **TBox Dial it! under VISTA**

This utility, used to dial to TBox from IE to display Webforms, does not work under VISTA.

A new tool will be developed in replacement.

In the meantime, under VISTA, you have to create manually the network connection to dial TBox.

3. **Camera**

A camera with Ethernet port and TCP/IP protocol can be connected to TBox.

Working with **TBox MS16** and **TBox LITE**, there are some camera time out issues we cannot bypass. It is due to the mechanism of data transfer of some camera (frames sent by half packet, without known reason). This limit today to use to camera with slow image size, like **D-LINK DCS900**, or **AXIS 207**.

Working with **TBox MS32** as there is much more resource and it runs LINUX, we don't encounter those problems.

4. **% in WebForms**

The character % can be used when displaying Tag value to select predefined format. For instance: **%V** (to display the value), **%U** (to display the unit), **%3.2f** (to fix the display of Floating point variable), ...

If you want to display the character %, you have to indicate %%.

Up to TWinSoft 10.03, a mistake in using the character % had no effect.

As of TWinSoft 10.03 and a new development environment (VS2008), a new "C" library is automatically used which requires proper use of %.

1. Save/Restore Internal Registers

New menus from "Communication":

- "Download" → "Internal registers"
- "Upload" → "Internal registers"

This feature allows saving the current values of all internal variables of a TBox and send it back to another one, of the same model (CPU3, -MS, -LT, -WM, -LP).

Local variables cannot be saved.

Most of the time, the use will be save/restore, without any modification.

But data is saved in a XML format file, which gives the possibility to edit the file directly in EXCEL and change the values before sending back to the RTU.

DO NOT CHANGE THE NAMES !

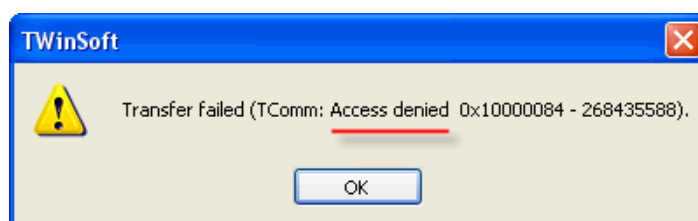
Example:

	A	B
1	Name	Value
2	Pump1	0
3	Pump2	0
4	Valve	0
5	StartPump1	0
6	StartPump2	0
7	StartValve	0
8	Check	173
9	slidertimer	1
10	Tank1	4920
11	Tank2	5000
12	Tank3	8080
13	Flowmeter1	0
14	Flowmeter2	0
15	Alternator	0
16	Slider1	3.2
17	Slider2	3.45

As of Office 2007, the XSLT file (for declaring "styles") is created automatically, which makes edition easy.

Remarks:

1. About "Download" and "Upload" there is sometimes some confusion. Think at Internet !
 - Download: means from TBox to the PC
 - Upload: means from the PC to the TBox
2. You need to be logged as "Engineer" to upload internal registers. In other case an error message pops up:



2. New security features

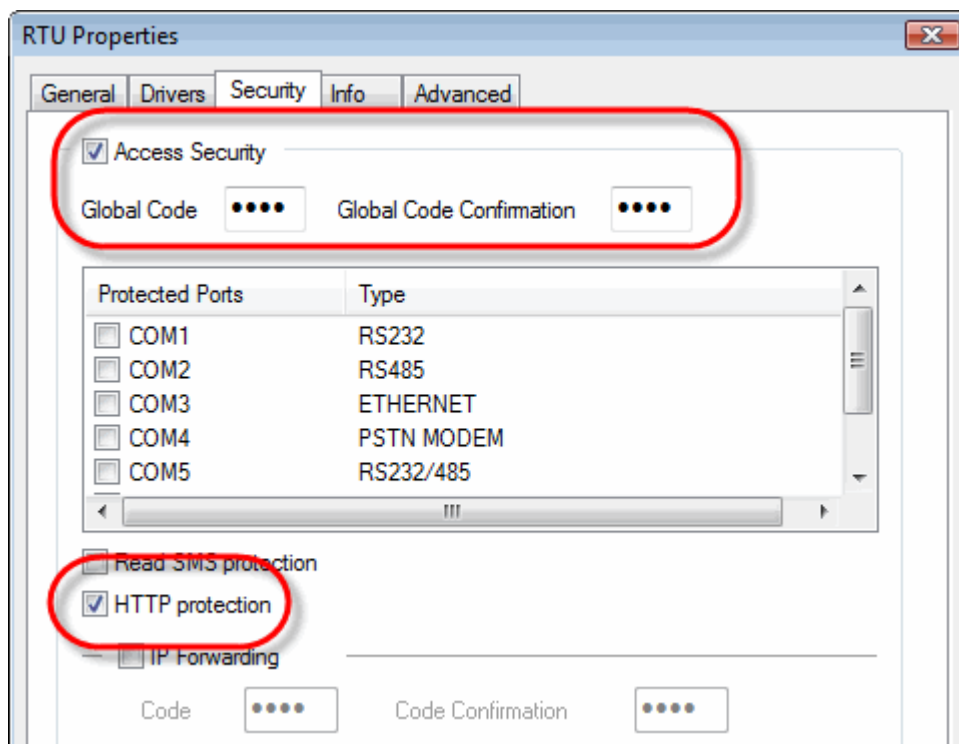
2.1. HTTP protection

Ethernet port can already be protected (see RTU properties → Security).

This protection acts at “ModBus” level. It means that a login is required to send a program to TBox and to change Tag values.

HTTP protection assures protection at HTTP level, to prevent accessing “objects” stored in TBox using HTTP protocol. Typically, displaying HTM files using Internet Explorer.

To activate HTTP security, go to RTU properties → Security:



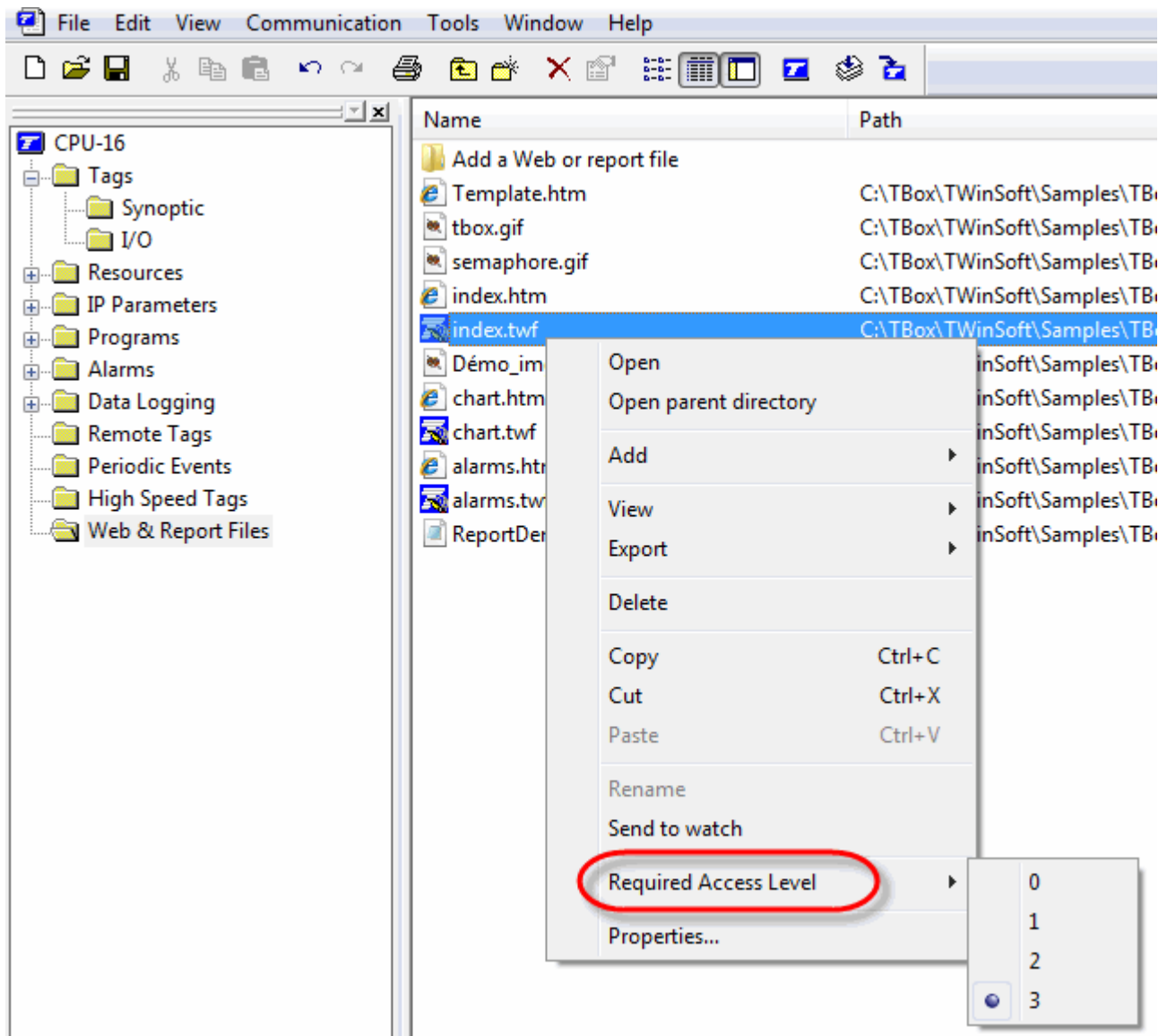
Activate “Access Security” and type a global code (4 digits HEX code).

To create Login, use the “Password” utility: go to “Programs” → “Techno Trade” → “Accessories” → “Password”.

It is not mandatory to protect the communication port. Protecting communication port will provide a supplementary security at “ModBus” level, against changing Tag value.

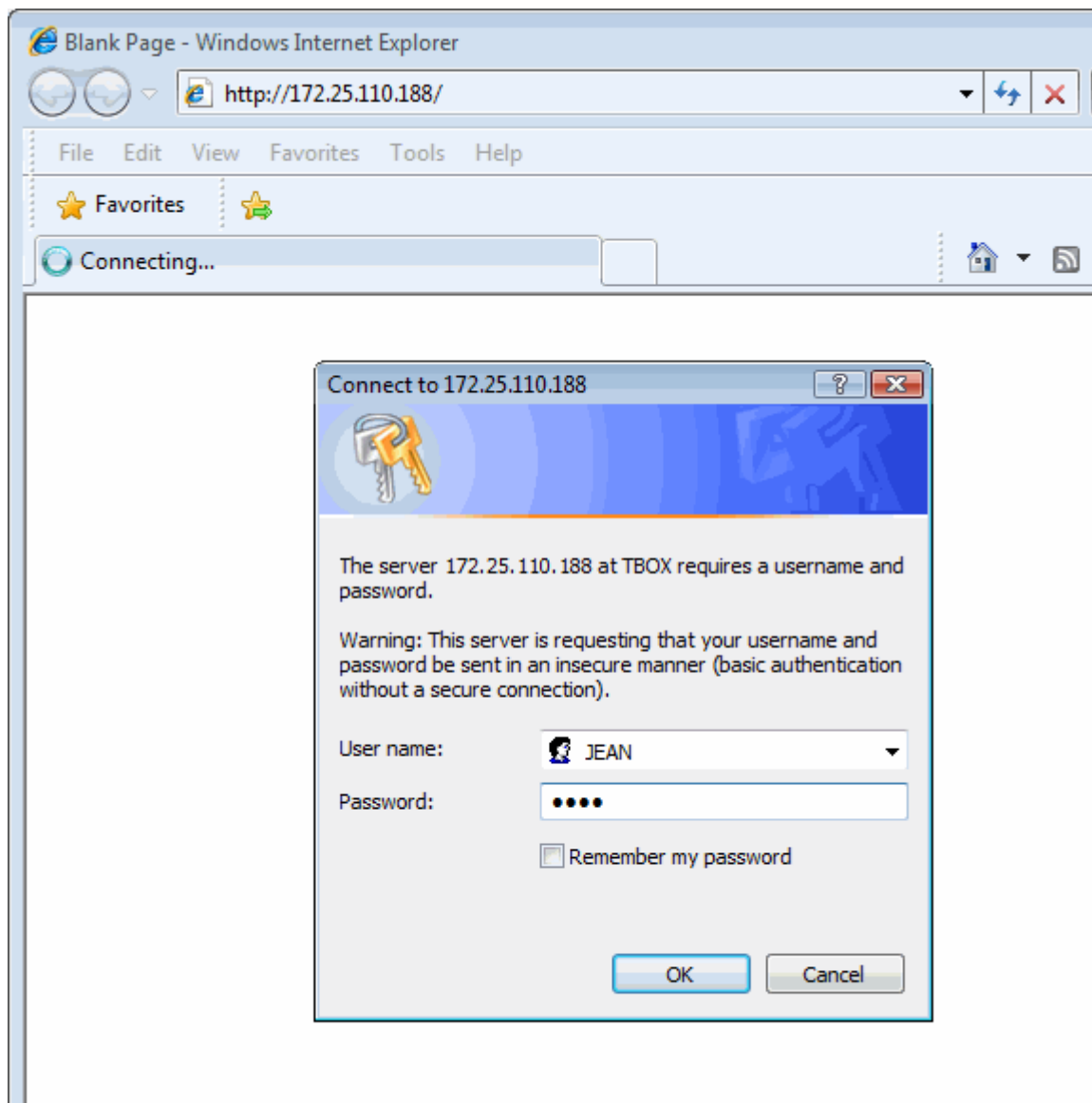
Once HTTP security is activated, each object building the web site can be assigned an access level.

In the folder "Web and Reports files", right click each object. ALL files composing a view must be given an access level: <file>.TWF, <file>.HTM , <file>.GIF (if used), ...



By default, the highest access level is defined (3), meaning the objects are accessible only to "Engineer".

Once HTTP protection has been activated (and sent to the RTU), you are prompted to login when opening IE to display Webforms:

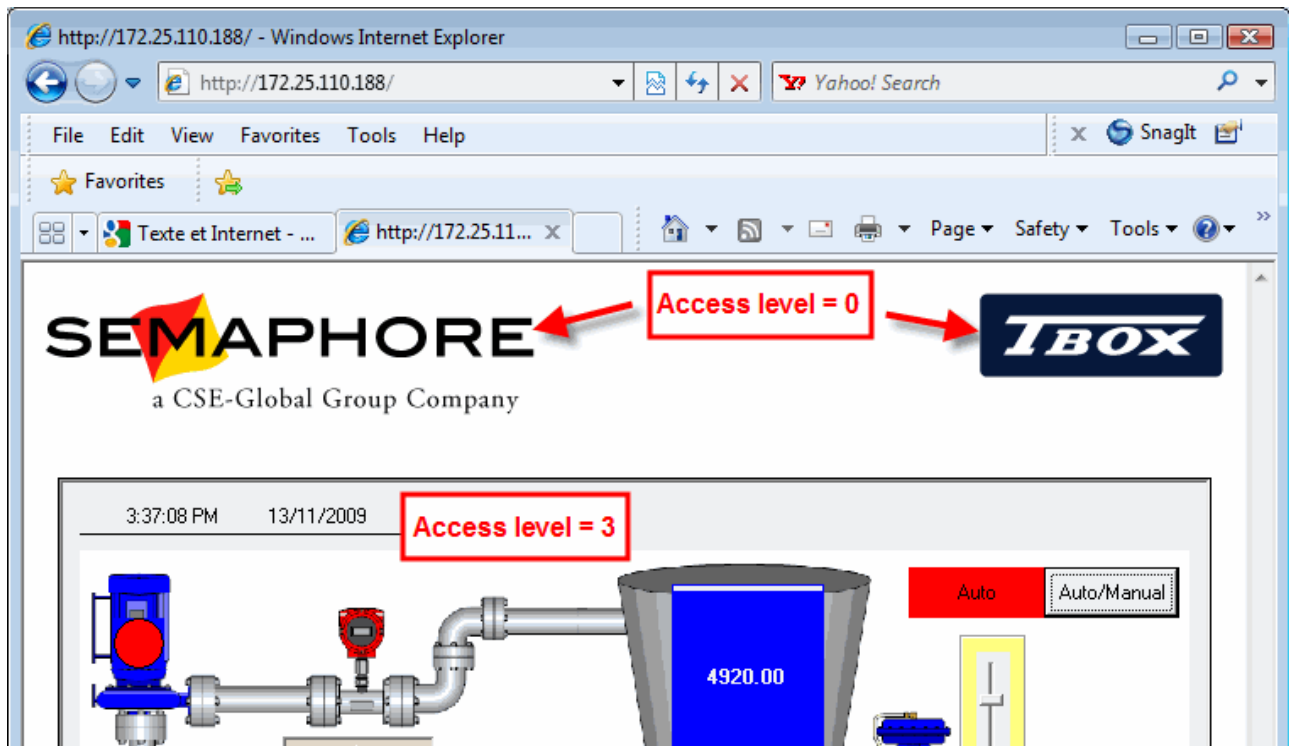


One Login is required by PC.
Different sessions of IE on one PC uses the same login.

Ease of use recommendations

1. Common objects

Objects available for everybody and objects part of the template (icon, images, ...) should be assigned an access = 0. This means it is available to any level of user.

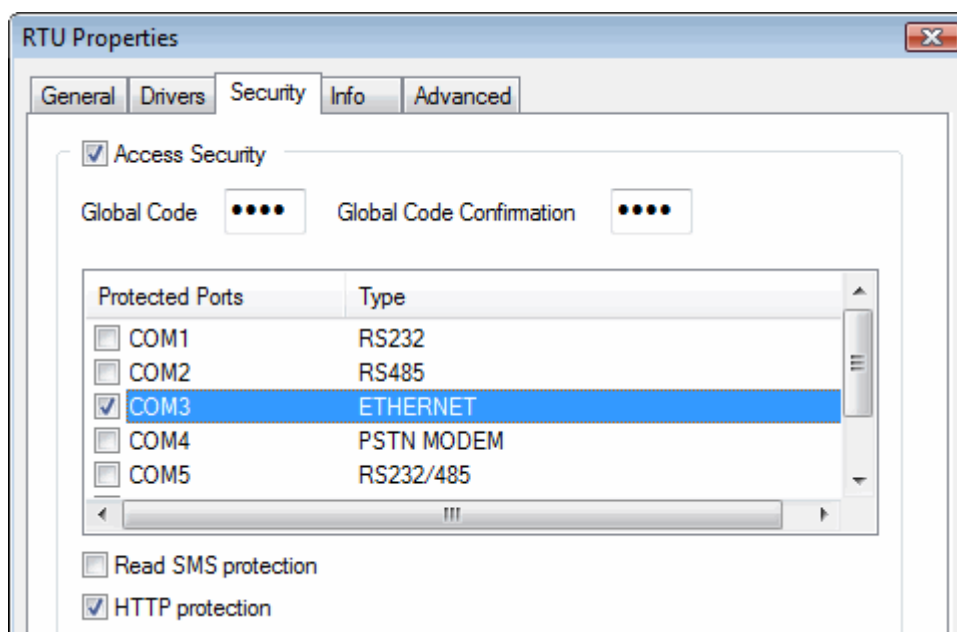


2. With "IP" port also protected

Typically, Ethernet or GPRS communication port.

In case you need protection against writing to Tags or sending a program.

If the port is also protected, two login will be required: HTTP and ModBus/TCP.



3. Reminder about writing to Tags

If the communication port is protected, a user with access level = 2 (Read/Write) can only change value if the presentation of the Tag is set "**write enable**" (see tab "Presentation" of the concerned Tags).

A user with access level = 3 can always change Tag value.

2.2. HTTPS

HTTP S combines HTTP and SSL to assure encryption of data.
It is available only for MS-CPU32, through an Add-on.

2.3. IEEE 802-1X

IEEE 802-1X protocol provides an authentication mechanism to devices wishing to attach to a LAN.

It is available only for MS-CPU32, through an Add-on.

3. About SMS

3.1. *Sending of datalogging through SMS*

This new feature of TBox allows sending **TBox archives through binary SMS messages.**

Sending of data is then very efficient which is particularly useful with **ultra low power applications**, such as TBox-WM, TBox-LP, ... In addition, SMS service is low cost and more reliable than DATA communication when GSM coverage is weak.

Sending database via SMS is a **cost effective solution** and now available for the entire TBox family.

As of version 10.06 of TWinSoft, a new special syntax has been implemented in the alarm messages. Be careful that you have to use also the **OS version 3.20** or higher.
Here is the syntax:

- **^DIG^** : send the last 16 elements of the digital chronology
- **^ANA^** : send the last 12 elements of the analog chronology
- **^STi^** : send sampling table of index 'i' (64 last values with a 16 bit Tags or 32 last values with a 32 bits/Float Tag)
- **^STCi^** : send sampling table of index 'i' compressed (96 last values)

Info available in Alarm list

As there is no text message sent, the info **[0101...]** will be displayed in the list of alarms (TWinSoft, Webform, TView)

We provide a tool able to read SMS and convert them into .TMA or .CSV files.

Go to www.cse-semaphore.com/mytbox → Download → Utilities

3.2. SMS management in PDU format

Since the sending of datalogging through SMS requires binary format, we had to modify the way SMS messages are handled, as well for sending or reading.
 There are 2 format for handling SMS: **PDU** and **TEXT** formats.
 The PDU format is mandatory to send binary messages, like datalogging. For this reason, we have decided that all SMS would be handled in PDU format.

This changing should not affect your application.

About ReadSMS:

ReadSMS has also been adapted to the PDU format.
 It uses the default GSM 7 bits character table "GSM 03.38".
 The characters accepted as incoming message are:

Hex	0	10	20	30	40	50	60	70
0	@	Δ	space	0	i	P	ı	p
1	£	_	!	1	A	Q	a	q
2	\$	Φ	"	2	B	R	b	r
3	¥	Γ	#	3	C	S	c	s
4	è	Λ	¤	4	D	T	d	t
5	é	Ω	%	5	E	U	e	u
6	ù	Π	&	6	F	V	f	v
7	ì	Ψ	'	7	G	W	g	w
8	ò	Σ	(8	H	X	h	x
9	Ç	Θ)	9	I	Y	i	y
A	LF	≡	*	:	J	Z	j	z
B	Ø	ESC	+	;	K	Ä	k	ä
C	ø	Æ	,	<	L	Ö	l	ö
D	CR	æ	-	=	M	Ñ	m	ñ
E	Å	β	.	>	N	Ü	n	ü
F	å	É	/	?	O	§	o	à

3.3. SMS in UCS-2 format

TWinSoft and OS use **Universal Character Set** on **2** bytes (UCS-2).
 It allows sending message in languages other than Latin (Hebrew, Greek, ...)

Today, it is only available for MS-CPU32. By default, TWinSoft uses the GSM 03-38 table (see above). When a character is not available, it uses automatically UCS-2 table.

Be aware that the length on UCS-2 message will be limited as it uses 2 bytes instead of one per character.

WARNING: WebForms, TView and TWinsoft → Download Alarm list, still need to be adapted to display the message correctly.

4. SMTP – “SMTP Login”

When Authentication is required to send e-mail (SMTP), TBox supports PLAIN authentication.

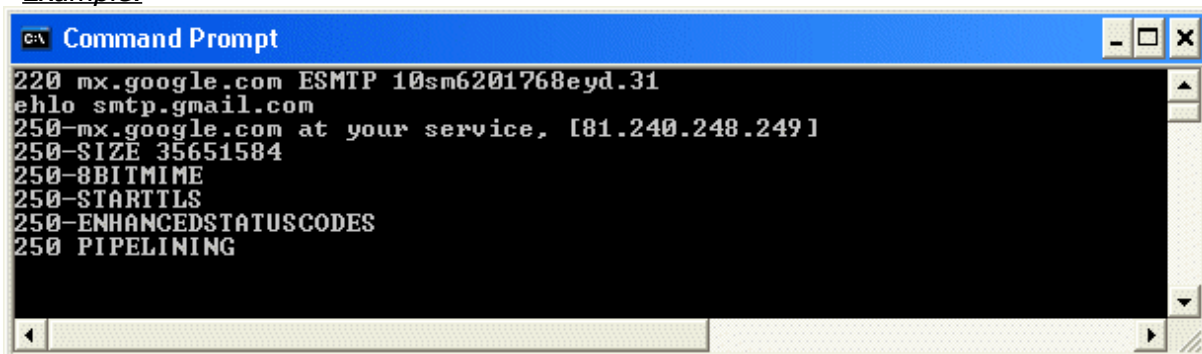
It supports now a second authentication standard: SMTP LOGIN.

Remarks:

To test which authentication methods are supported by your SMTP server:

- Open a DOS prompt window
- Type: `Telnet <name of smtp server> 25`
- At the answer, type: `ehlo <name of smtp server>`
- A list displays the authentication methods supported.

Example:



```
C:\> Command Prompt
220 mx.google.com ESMTP 10sm6201768eyd.31
ehlo smtp.gmail.com
250-mx.google.com at your service, [81.240.248.249]
250-SIZE 35651584
250-8BITMIME
250-STARTTLS
250-ENHANCEDSTATUSCODES
250 PIPELINING
```

smtp.gmail.com cannot be used with TBox. It only supports encrypted authentication and e-mail sending.

5. FTP – Active Mode

Today, available for MS-CPU32. It will be implemented later for MS-CPU16, -LT, -WM, -LP.

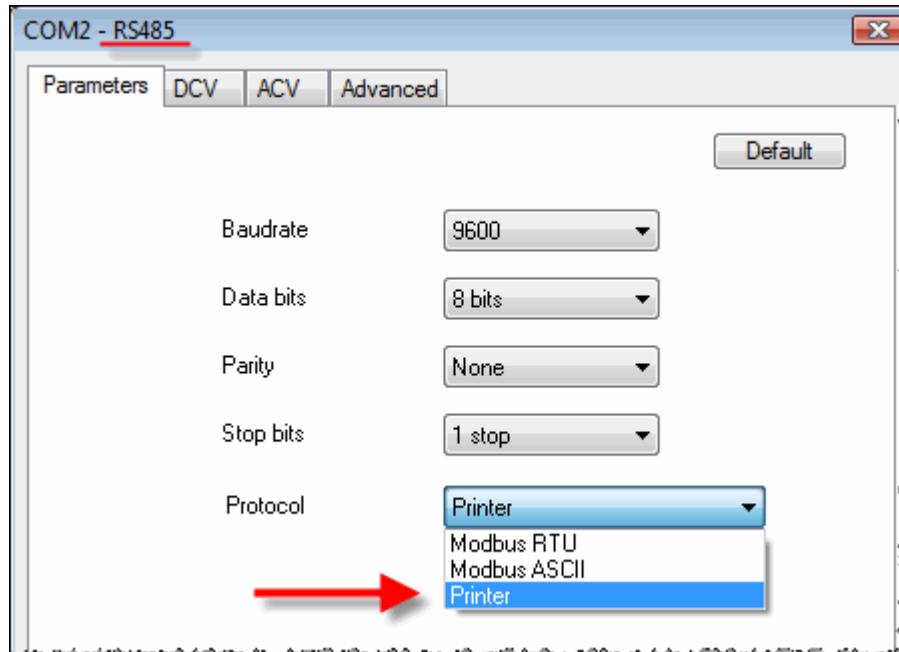
Active and passive modes determines which party control the destination TCP port for data transfer.

Active mode: The server determines the TCP port.

Passive mode: Client (TBox) determines the TCP port.

6. Protocol “Printer” on RS485

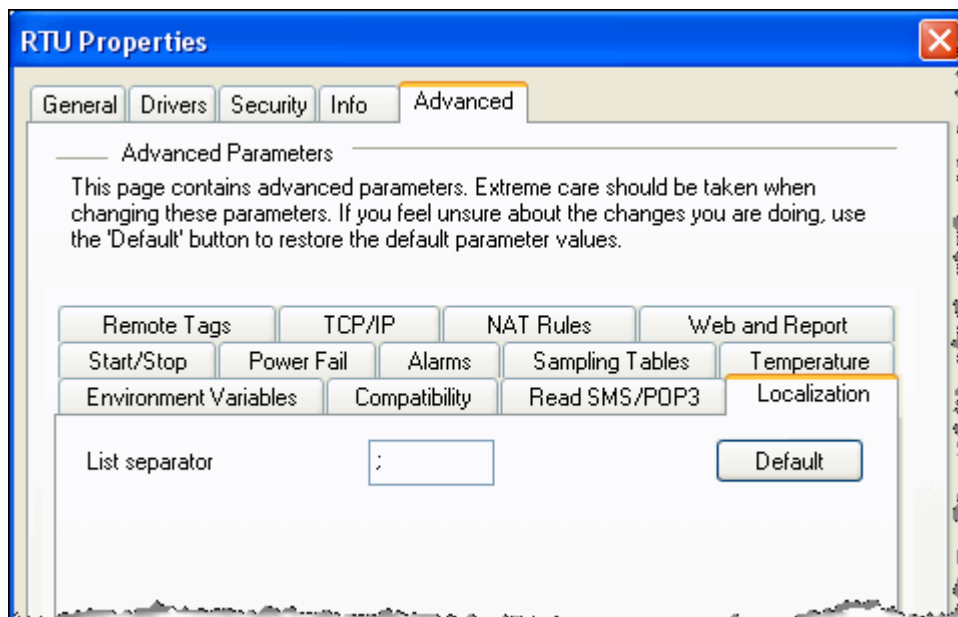
With TBox-MS and -LT, the port RS485 supports now “Printer” protocol, to connect a local, serial printer.



7. Localization

This new menu allows defining dynamic parameters specific to the PC localization.

The first step of those parameters is the character used as separator in CSV file, generated by the RTU:



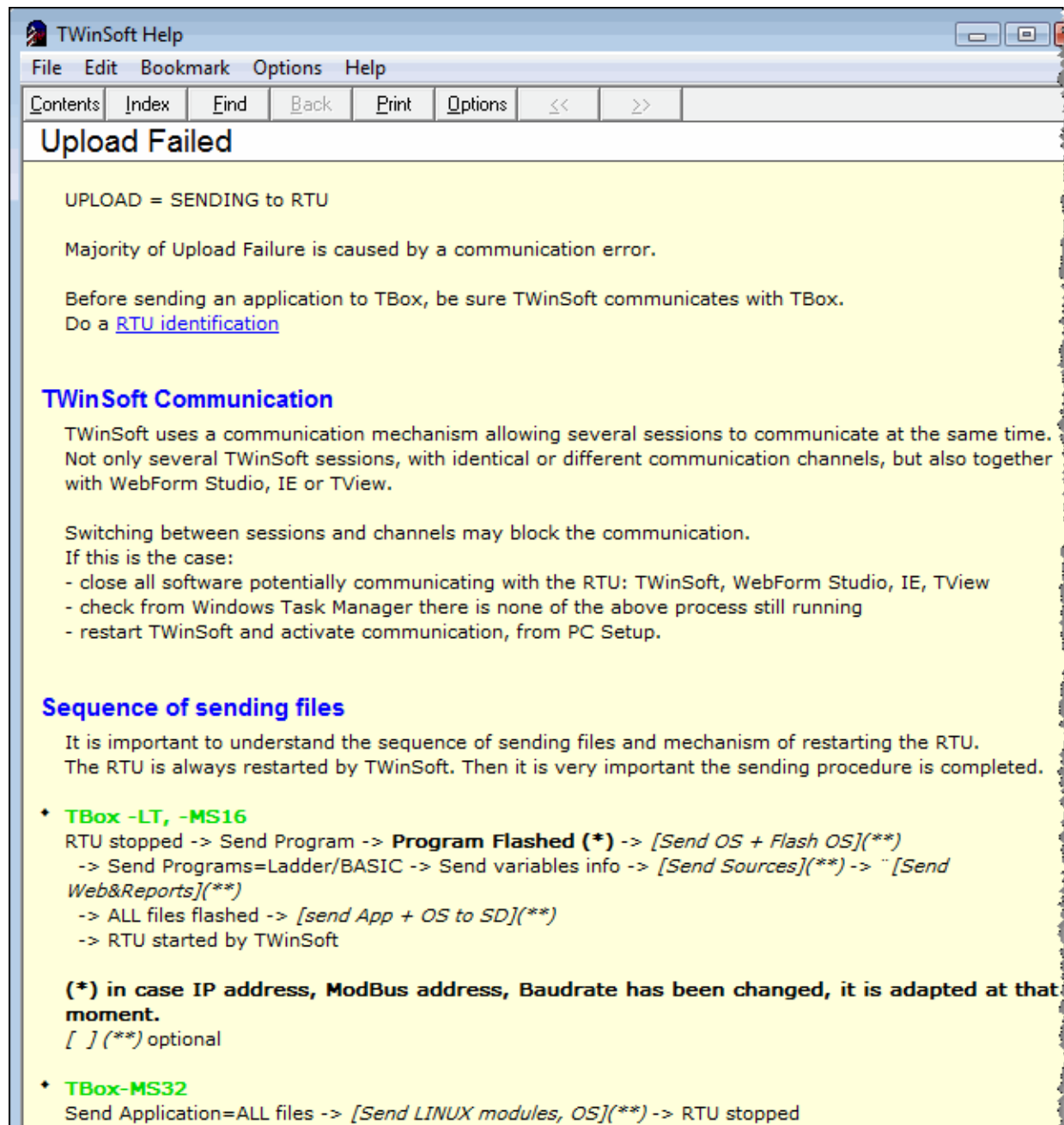
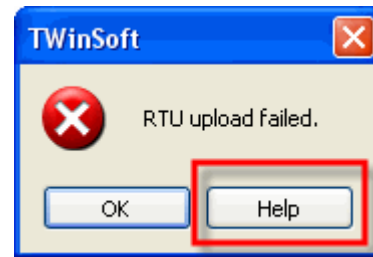
TWinSoft uses by default the separator defined in the regional settings of Windows.

8. Assistance to “RTU Upload Failed”

Sending an application to the RTU may fail.

Most of the time, because of communication error at different stage of sending.

Click on “Help” to have more information

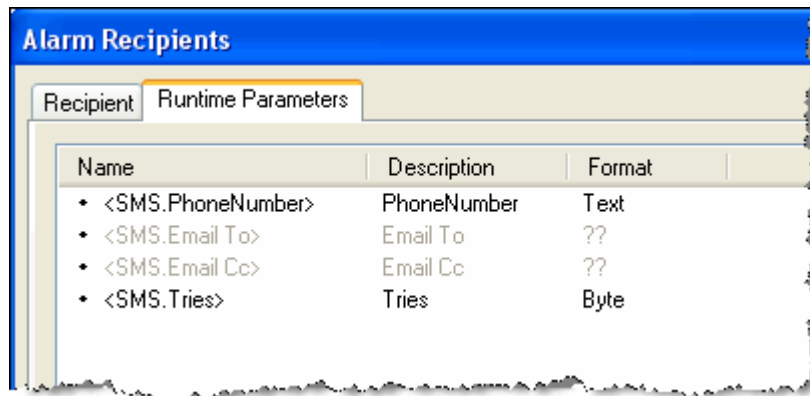


... more to read in TWinSoft help “Upload → Failed”.

9. New Runtime Parameter “Alarm Tries”

The number of tries an alarm is executed in case of failure is available as runtime parameter (parameter which can be changed dynamically through a Tag, format BYTE).

From each recipient, in tab “Runtime Parameters”, you can associate a Tag BYTE to the tries parameter.



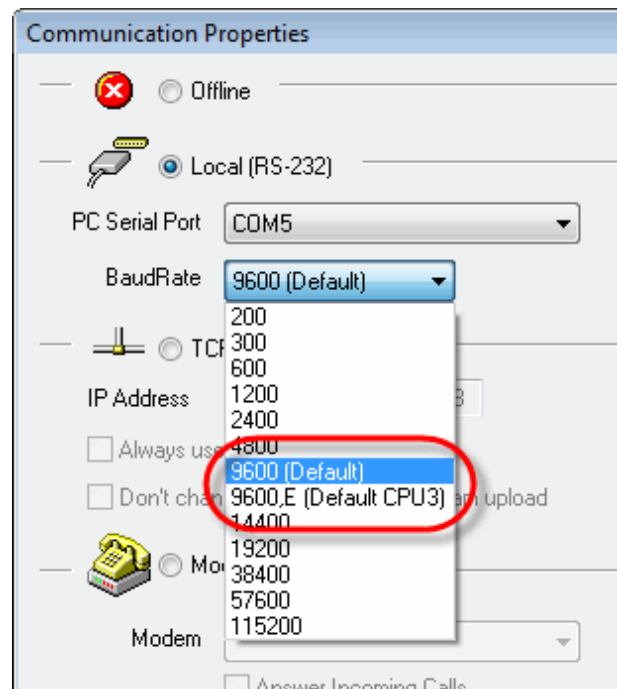
In addition, if tries=0 the recipient is automatically auto-ack.

It means, that when part of a group, the recipient will be automatically skipped.

10. Better Indication of Serial Default Baudrate

The default PC settings for serial communication requires 2 default settings:

- working with CPU-3: 9600, E
- working with all others (-MS, -LT, ...): 9600, N



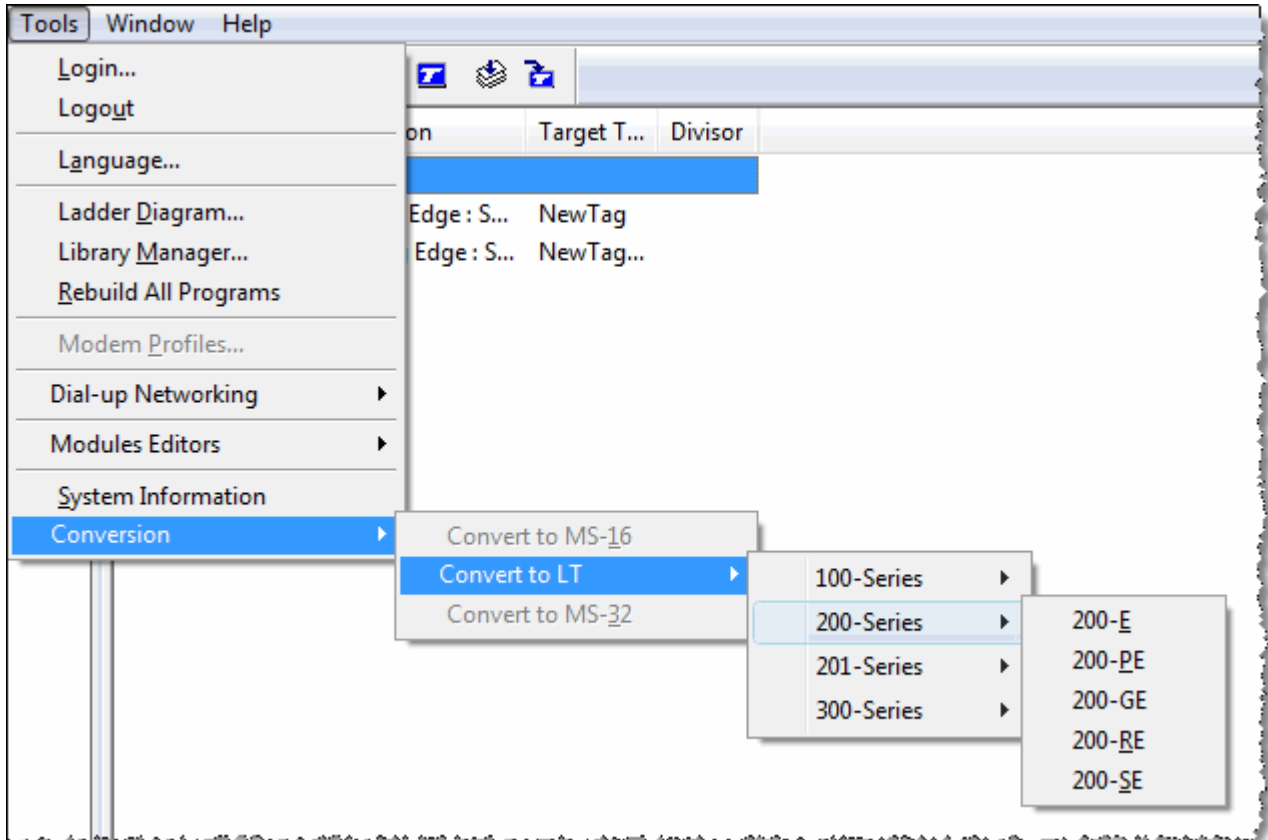
11. RTU conversions

11.1. CPU-3 to -MS16

I/O cards converted to equivalent MS-xxx I/O cards.

11.2. -LT to -LT

All models of -LT can be converted between each other.



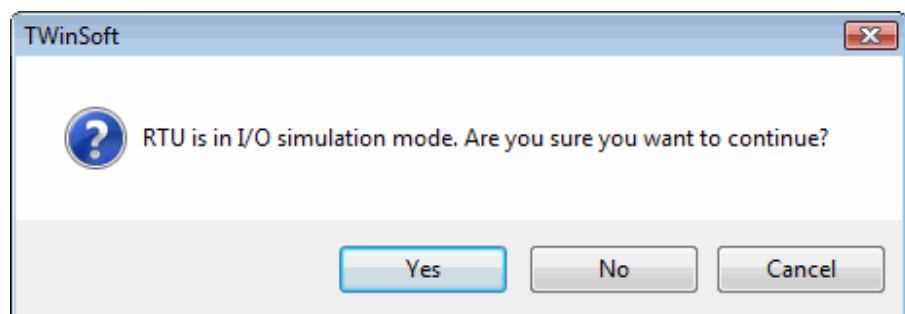
12. I/O simulation status

I/O simulation allows disconnecting I/O from the BUS. They act then as internal variables allowing you to write to inputs to simulate them.

This information is now available in the status bar.

Online : COM5,9600 - Engineer (I/O Sim.)

When leaving the application, you have to confirm you want to leave the RTU in simulation mode.



13. WebForm – New VB script parameter

Up to TWinSoft 10.05, the only way to act on visibility of object in Webform using VB script, was to use the "Normal" parameter "Visible".

As of TWinSoft 10.06, the **appearance** property of the object is available as parameter:

Value	Appearance
0	Text (value)
1	Color spot
2	Gauge
3	VU meter4
4	Invisible

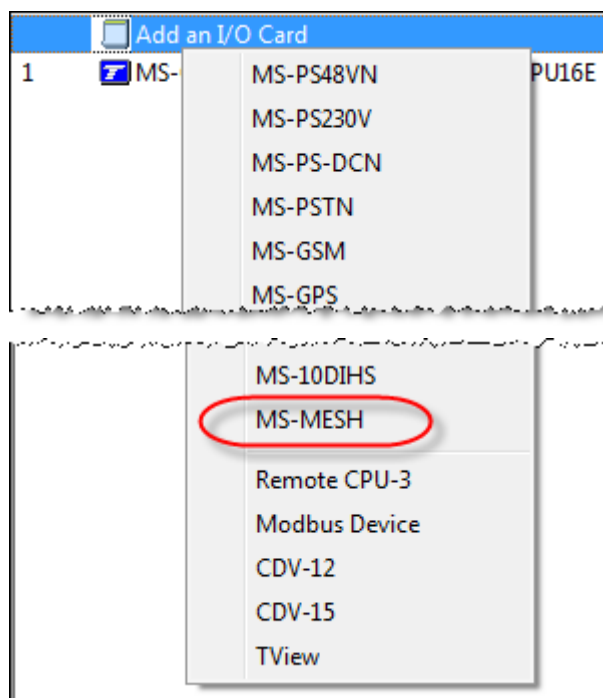
Example:

```
If this.value = 1 then  
this.APPEARANCE=0  
else  
this.APPEARANCE=4  
End if
```

14. New MS card – MS-MESH

MS-MESH is a Wireless module using a chip from **Millennial net**, based on **Zigbee** technology.

It provides access to various Wireless Sensors based on the same technology, like the Wi LEM sensors.



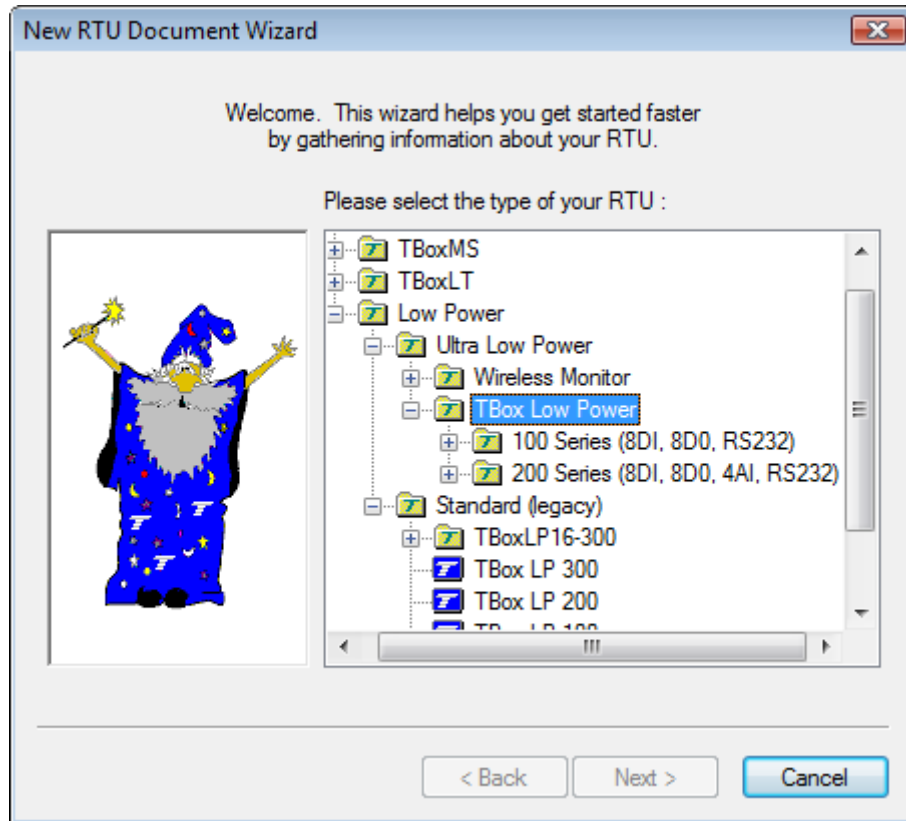
The communication is done through Remote Tags, to a device with ID=247.

Considering the coming productions of the modules, it has been made available in TWinSoft.

15. New Low Power RTUs

A new range of TBox Low Power is on track.

Considering the coming production of the RTU, it has been made available in TWinSoft.



Two families, with different I/O configurations are available:

- 100 series
- 200 series

16. New SMS Services

- ITALY: replacement of all entries
- All: add of PROCOLE_PDU
(except for Italy and entries sending message with EM and EH formats)
- FRANCE: add "Iridium --> GSM". Remark: SYNCHRO=20
- INDIA: "Hutch --> GSM". Change SMSC= +919825001002
- Add CANADA: "TAP CANADA" ! **Numeric only** !

Fixes & enhancement in TWinSoft release 10.06.1238

[TWinSoft Automation \(ref. B-1868\) : adding MS cards](#)

The last MS cards (like MS-MESH, MS-10DIHS) cannot be added through Automation.
Corrected.

[TBox -MS32, -MS16, -LT \(ref. B-1863, B-1866\): Display of Alarms](#)

When using the option "Display all alarm calls", if some calls have failed, they are not always indicated as "Auto-Ack".
Corrected.

[TBox -MS16, -LT \(ref. B-1859\): Drivers C](#)

Drivers Library: Incorrect handling of received Modbus 'packets' when using Modbus Master functions.
Corrected.

[TWinSoft \(ref. B-1855\) : Import/Export Registers](#)

With CPU-3, some Export does not work. Problem linked to the max. size of blocks.
Corrected.

[TWinSoft \(ref. B-1851\) : TWinSoftDoc Parser](#)

Versioning issue. May cause TView malfunctioning when synchronization to the RTU
Corrected.

[Low Power \(ref. B-1840\): "PgmCont" variable](#)

VARIABLE "PgmCont" permanently at 1 causes a stop of the program after a while.
Corrected.

[TWinSoft Automation \(ref. B-1824\) : Disala2, Disala3, Disala4](#)

Those three items of alarm handling are not supported by Automation.
Corrected.

[TBox-MS32 \(ref. B-1821\): SMS message](#)

SMS message including successive ~Tag~Tag~, ... without any space displays wrong value.
Corrected.

Fixes & enhancement in TWinSoft release 10.06.1237 (RC2)

Date: December 7, 2009
OS 32: 1.13.152
OS-C: 3.23.670

[TWinSoft \(ref. B-1823\) : Ladder](#)

TWinSoft crash with some Pack & Go. Some regression caused by fixing copy/paste issue (see B-1391)
Corrected.

[TWinSoft \(ref. B-1549\) : Ladder](#)

Some lines of ladder cannot be deleted. TWinSoft returns a message "Encountered invalid argument". Error appears because of a changing in a Windows library.
Corrected

Fixes & enhancement in TWinSoft release 10.06.1236 (RC1)

Date: December 4, 2009
OS 32: 1.13.152
OS-C: 3.23.670

[TBox-MS32 \(ref. B-1814\): Alarm](#)

When resetting "AlaOn" while modem is synchronizing, provokes an Watch Dog at modem connection.
Corrected.

[TBox-MS32 \(ref. B-1813\): Alarm](#)

When resetting "AlaOn", all alarms are "Ack'ed". They must be "Auto-Ack"
Corrected.

[TWinSoft Automation \(ref. B-1812\) : Tag Counter](#)

When creating a Counter, it is now in "Signed" format. It must be in "Unsigned" format.
Corrected.

[TWinSoft \(ref. B-1810\) : Sending program + Plug & Go](#)

With very large project and RTU equipped with SD card (Plug & Go), writing to the SD may take longer time than expected by TWinSoft.
Time out increased from 60 sec. To 80 sec.

[TComm.dll \(ref. B-1808\) : with OS-C](#)

TComm supports Upstream or Downstream model of Flash memory.

[TWinSoft Automation \(ref. B-1806\) : System Tag](#)

When creating a System Tag, it should take its default properties.
Corrected.

[TBox-MS32 \(ref. B-1802\) : FTP](#)

Due to communication issues with FTP server, the sending of alarms may stop.
Corrected. To be validated

[Low Power \(ref. B-1797\): PPP connection](#)

With some ISP, sometimes PPP connection fails at "Challenge" level.
Corrected.

[TWinsoft \(ref. B-1795\): LT resources](#)

LT-xxx-KE model introduced.
LT-xxx-RE serial port is configured bu default at 19200.

[TBox-MS32 \(ref. B-1791\): TCP/IP](#)

When massive TCP/IP communication with many errors, communication may be blocked by an excessive use of LINUX contexts.
Corrected. To be validated

[TBox -MS16, -LT \(ref. B-1788\): Alarms](#)

Wrong handling of "DisAla", since introduction of DisAla2, DisAla3, ...
Corrected.

TBox-MS32 (ref. B-1781): FTP alarms

Simultaneous FTP alarms through LAN & GSM provoke an auto-ack of the alarm through LAN
Corrected.

TWinSoft (ref. B-1779, B-1750, B-1661) : Import/Export

When importing and replacing Tags having presentation, the latter is deleted.
Corrected.

Note: Import/Export does not handle "Presentation".

TWinsoft (ref. B-1778) : Tag creation

Copy/paste of a Tag ending with "_", creates a Tag ending with "__1" not editable by
TWinSoft.
Corrected.

TWinsoft (ref. B-1777) : Files in "Web & Report" folder

Possibility to have identical files if they are located in different folders.
TWinSoft generates now a warning.

TWinsoft (ref. B-1776) : with drivers

If parameters are missing, TWinSoft may crash at compilation.
Corrected, TWinSoft generates now errors.

TWinsoft (ref. B-1775) : Conversion

Time zone is not converted when converting a document into another model of RTU.
Corrected.

TWinsoft (ref. B-1757) : Conversion

HTTP protection is not converted from -MS16 document to -MS32.
Corrected.

TWinsoft (ref. B-1748 - 1391) : Ladder Copy/Paste

Incorrect copy/paste provokes crash of TWinSoft when opening Ladder, saving, doing
rebuild all.
Corrected.

TWinsoft (ref. B-1745) : Daylight Saving

When Saturday is the last day of October or March, automatic changing of time happens 1
week later. This happened in Europe, last October 2009.
Corrected.

TComm.dll (ref. B-1724) : Limit in "write" operation

Bad limit in 16/32bit registers write operation. Limits are for read 125/62 and must be for
write 123/61
Corrected.

TBox -MS16 -LT, -WM, -LP16 (ref. B-1723): GSM modem

When the network signal is very weak and provokes communication error, the modem state
machine may be blocked.
Corrected.

Pack & Go (ref. B-1721) : Modem

When using Pack & Go with a modem connection to access RTU, a login is always required, even when the RTU is not protected.
Corrected.

TWinsoft (ref. B-1719) : TCP port in Pc Setup

TWinSoft does not adapt itself when changing ModBus Slave TCP port.
Corrected.

TBox -MS, -LT (ref. B-1714 - 1713): TCP/IP

Transaction ID is not handled.
It causes communication issues doing "Rerouting" when originator uses transaction ID.
Corrected.

TBox -WM (ref. B-1712): Modem

Modem has to be shut down when modem state=255 (modem initialization fails).
Corrected.

Low Power (ref. B-1706): Interrupt input

Counters associated to interrupt inputs are not refreshed at wake-up. One has to wait the next cycle.
Corrected.

TBox -MS16, -LT (ref. B-1704): Communication

When receiving many characters in Rx queue during a modem connection (typically rubbish characters), it may interfere on Rx buffer and desynchronize communication on other ports.
Corrected.

TWinsoft (ref. B-1702) : Mathematical Operation

Mathematical operations including 2 constants (ex: A=17 MOD 2 or B=1200/2) is not compiled.
Corrected.

TBox-MS32 (ref. B-1701): Default IP address

With OS 1.09.100 and 1.11.124, the default IP address 192.168.1.99 is assigned to COM4 instead of COM3.
Corrected.

TBox -MS, -LT (ref. B-1695): Group of Recipients

Wrong handling recipients when there are associated to timetables.
Corrected.

TWinsoft (ref. B-1693) : Project Workspace Icon

Icon is not reflecting the type of program (BASIC or Ladder).
Corrected.

TWinsoft (ref. B-1691) : Variable Names

In ladder edition, use consistent names for internal variables according to the type of RTU: "Special Registers" for CPU3 and "System Variables" for -MS, -LT, -WM, -LP
Corrected.

TBox -MS16, -LT (ref. B-1689): HTTP

Protection is always active even if deactivated in TWinSoft.
Corrected.

TComm.dll (ref. B-1687) : TCommDownloadDB

TCommDownloadDB exits with wrong error value when HistGetNext fails ("System cannot find the file specified" message in TView).
Corrected.

WebForm Studio (ref. B-1677) : Number of Objects

Maximum number of objects in a Webform is 770 objects.
It has been increased to 4000.

WebForm Studio (ref. B-1675) : Unsigned 32 bits

Not possible to write a value > 2147483647.
Corrected.

TWinSoft (ref. B-1674) : Report

Report compression may crash TWinSoft.
Corrected.

TBox -MS, -LT (ref. B-1667): HTTP protection

Weakness in protection, when writing data in HTTP directly from the URL.
Corrected.

TWinSoft (ref. B-1664) : Add-on Configurator

Scroll bar have been added to configuration window. According to the configuration, the window may be too long for low resolution PC screen.

TWinSoft Automation (ref. B-1663) : Runtime Parameters

When a Text Tag is associated to a parameter, it must be "Signed" to be used in Automation. A Text Tag signed is a string that can start with "-".
Corrected.

TWinSoft (ref. B-1662) : Report XML

Key %Address% in Template is not computed correctly.
Corrected.

TWinSoft (ref. B-1653) : Remote Tags

The function used (FC??) is not displayed in French and German.
Corrected.

TBox -MS, -LT (ref. B-1648): Alarms

Alarms not generated when expected when combining "Disala" and "End of Alarm".
Corrected.

TBox-MS32 (ref. B-1642): "Stop" button

The option "Stop Program with Stop button" does not appear anymore in TWinSoft.
Corrected.

TBox -MS16, -LT (ref. B-1641): FTP

Sending of large .CSV file may stop. Alarm is auto-ack.
Add of protections when displaying numbers in report.
Corrected.

TBox -LT (ref. B-1636): Conversion

Conversion from LT-xxx-GE to LT-xxxPE and reciprocal is grayed.
Corrected.

TWinSoft (ref. B-1635): Conversion

After conversion, the station name is not refreshed in the Project Workspace.
Corrected.

TWinSoft (ref. B-1634): GPS

It must be forbidden to install several GPS card on a rack.
Corrected.

Low Power (ref. B-1628): DI with Filter

When a DI has a filter running across wake-up, state changing will not be detected at next wake-up.
Corrected.

TWinSoft (ref. B-1626) : Runtime Parameters

e-mail address runtime parameters increased from 30 → 50 characters, to be consistent with other runtime parameters.

TWinSoft (ref. B-1624) : Timers in FB

There is no warning when declaring twice the same timer with different types. No problem in "Program".
Corrected.

TWinSoft (ref. B-1618) : Timer

Renaming a timer is not allowed.
Corrected.

TWinSoft (ref. B-1598) : Runtime Parameters

Parameter "inhibition" of chronology and alarm condition renamed "Handling".

WebForm Studio (ref. B-1597) : Grid

Format "Text + Value" is not memorized. When reopening the grid, the filed is empty.
Corrected.

TWinSoft (ref. B-1594): Conversion

Some configurations are not converted from -MS16 to -MS32:

- Advanced alarm parameters
- Call all recipients in Alarm conditions
- CPU3 compatibility

Corrected.

TWinSoft (ref. B-1592) : LT-xxx-E

Upload of OS with changing of IP address fails. TWinSoft does not take the new IP address into account.
Corrected.

TBox-MS32 (ref. B-1585, B-369): Clock Synchronization

Important clock drift, around 3-4 seconds per hour.
Corrected.

TWinSoft (ref. B-1581) : Listing of Libraries

Selection of library (File → Library) displays not only Ladder/BASIC library, but also OS-C .lib files.
Corrected.

TWinSoft (ref. B-1578) : Resources

When deleting I/O resources, TWinSoft may crash.
Corrected.

TWinSoft (ref. B-1576, B-1571, B-1552, B-1546) : Libraries

Conversion of library (.lib, .tbn) and opening of library may fails. Problems introduced with allowing access to local Tag from Automation.
Corrected.

TWinSoft Automation (ref. B-1668) : Remove Program

Document.RemoveProgram does not work under .NET
Corrected.

TCommX.ocx (ref. B-1567) : Chart in Webform

Downloading data in chart may return the msg box "Slave device busy" when there are many series to display. This because the OS has not enough time to prepare data for all series.
Series are downloaded with a limit of 4 series at a time.

WebForm Studio (ref. B-1564) : Grid

It is not possible to write text characters, required for "Float" separator or Text Tag.
Corrected.

TBox-MS32 (ref. B-1560): SampleXXXX BASIC function

Using this function may provoke watchdog at startup of the CPU.
Corrected.

TWinSoft (ref. B-1548) : Remote Tags

According to the device type and number, quantity of remote Tags associated may be limited to 100.
Corrected.

TWinSoft (ref. B-1547) : End of Alarm

By default, with new document, the field contains the text: "END:" (in Advanced RTU properties → Alarms).

TWinSoft with TBox-WM (ref. B-1363): button

Remove STOP button configuration, not available with TBox-WM.
Corrected.

Low Power (ref. B-1299) : Flow input

Unit/Time configuration for "Zero threshold" is always restored to "Unit/Hour", which ever time unit for measuring flow is selected (hour, min or second).
Corrected.

WebForm Automation (ref. B-1297) : Webform Save

WebForm.Save does not work.
Corrected.

TWinSoft (ref. B-772) : Print

Remote device information missing in TWinSoft document printout: Device Trigger, Trigger condition, IP address (if required).
Corrected.

TWinSoft (ref. B-624) : Tag selection

In Ladder edition, when selecting a Tag, TWinSoft remembers the group. At next opening, it opens the same group.
One memorization per type of variable (Digital / Analog)